



# PIA Dimensions Portfolios<sup>SM</sup>

Built on More than a Half-Century of Academic Research

*Legally Sound, Academically Based, Cost Efficient*

## All PIA Dimensions Portfolios

Second Quarter Performance Report

As of June 30, 2025

*Prepared for:*

**Southeast Valley Gastroenterology Consultants, PC**

**401(k) Profit Sharing Plan**



# Periodic Performance

Monthly: 3/1/2000 - 6/30/2025

Rates of Return (%)													
	YTD	1 Month	3 Months	6 Months	1 Year	3 Years	5 Years	10 Years	Report Date Range	Since First Full Month	St.Dev Since First Full Month	First Full Month	Currency
<b>SEVG - PIA Dimensions 100/0 Portfolio - R2</b>	<b>10.36</b>	<b>4.30</b>	<b>8.83</b>	<b>10.36</b>	<b>15.22</b>	<b>14.84</b>	<b>15.05</b>	<b>8.71</b>	<b>8.55</b>	<b>8.55</b>	<b>16.84</b>	<b>3/2000</b>	<b>USD</b>
<b>SEVG - PIA Dimensions 80/20 Portfolio - R2</b>	<b>8.69</b>	<b>3.51</b>	<b>7.26</b>	<b>8.69</b>	<b>13.08</b>	<b>12.46</b>	<b>12.10</b>	<b>7.33</b>	<b>7.71</b>	<b>7.71</b>	<b>13.25</b>	<b>3/2000</b>	<b>USD</b>
<b>SEVG - PIA Dimensions 70/30 Portfolio - R2</b>	<b>7.86</b>	<b>3.11</b>	<b>6.47</b>	<b>7.86</b>	<b>12.00</b>	<b>11.29</b>	<b>10.64</b>	<b>6.63</b>	<b>7.27</b>	<b>7.27</b>	<b>11.52</b>	<b>3/2000</b>	<b>USD</b>
<b>SEVG - PIA Dimensions 60/40 Portfolio - R2</b>	<b>7.09</b>	<b>2.74</b>	<b>5.68</b>	<b>7.09</b>	<b>10.99</b>	<b>10.33</b>	<b>9.38</b>	<b>5.97</b>	<b>6.78</b>	<b>6.78</b>	<b>9.87</b>	<b>3/2000</b>	<b>USD</b>
<b>SEVG - PIA Dimensions 50/50 Portfolio - R2</b>	<b>6.25</b>	<b>2.34</b>	<b>4.90</b>	<b>6.25</b>	<b>9.92</b>	<b>9.17</b>	<b>7.94</b>	<b>5.23</b>	<b>6.21</b>	<b>6.21</b>	<b>8.22</b>	<b>3/2000</b>	<b>USD</b>
<b>SEVG - PIA Dimensions 40/60 Portfolio - R2</b>	<b>5.61</b>	<b>1.96</b>	<b>4.24</b>	<b>5.61</b>	<b>9.04</b>	<b>8.28</b>	<b>6.72</b>	<b>4.53</b>	<b>5.61</b>	<b>5.61</b>	<b>6.65</b>	<b>3/2000</b>	<b>USD</b>

Continued on next page

**Performance data shown represents past performance. Past performance is no guarantee of future results and current performance may be higher or lower than the performance shown. The investment return and principal value of an investment will fluctuate so that an investor's shares, when redeemed, may be worth more or less than their original cost. Average annual total returns include reinvestment of dividends and capital gains. To obtain Dimensional Fund performance data current to the most recent month-end access our website at [www.dimensionalfund.com](http://www.dimensionalfund.com).**

See Standardized Performance Data and Disclosures. Performance for periods greater than one year are annualized unless specified otherwise. Indices are not available for direct investment; therefore, their performance does not reflect the expenses associate with the management of an actual portfolio. Prior to listing date the following ETFs operated as mutual funds: DFUS, DFAC, DFAS, DFAT listing date 6/14/21; DFAX, DFIV listing date 9/13/21; and DFUV listing date 5/9/22. The NAVs of the predecessor mutual funds are used for both NAV and market price performance from inception to listing.

# Periodic Performance

Monthly: 3/1/2000 - 6/30/2025

Rates of Return (%)													
	YTD	1 Month	3 Months	6 Months	1 Year	3 Years	5 Years	10 Years	Report Date Range	Since First Full Month	St.Dev Since First Full Month	First Full Month	Currency
<b>SEVG - PIA Dimensions 20/80 Portfolio - R2</b>	<b>3.94</b>	<b>1.12</b>	<b>2.67</b>	<b>3.94</b>	<b>6.91</b>	<b>5.99</b>	<b>3.88</b>	<b>2.99</b>	<b>4.28</b>	<b>4.28</b>	<b>3.62</b>	<b>3/2000</b>	<b>USD</b>

Performance data shown represents past performance. Past performance is no guarantee of future results and current performance may be higher or lower than the performance shown. The investment return and principal value of an investment will fluctuate so that an investor's shares, when redeemed, may be worth more or less than their original cost. Average annual total returns include reinvestment of dividends and capital gains. To obtain Dimensional Fund performance data current to the most recent month-end access our website at [www.dimensionalfund.com](http://www.dimensionalfund.com). See Standardized Performance Data and Disclosures. Performance for periods greater than one year are annualized unless specified otherwise. Indices are not available for direct investment; therefore, their performance does not reflect the expenses associate with the management of an actual portfolio. Prior to listing date the following ETFs operated as mutual funds: DFUS, DFAC, DFAS, DFAT listing date 6/14/21; DFAX, DFIV listing date 9/13/21; and DFUV listing date 5/9/22. The NAVs of the predecessor mutual funds are used for both NAV and market price performance from inception to listing.

# Performance

Monthly: 3/1/2000 - 6/30/2025

## Rates of Return (%)

	Annualized Return	Cumulative Return	Growth of Wealth	Annualized Standard Deviation*	Average Return	Standard Deviation	Currency
SEVG - PIA Dimensions 100/0 Portfolio - R2	8.55	698.83	7.99	16.84	0.81	4.86	USD
SEVG - PIA Dimensions 80/20 Portfolio - R2	7.71	555.80	6.56	13.25	0.69	3.83	USD
SEVG - PIA Dimensions 70/30 Portfolio - R2	7.27	491.18	5.91	11.52	0.64	3.33	USD
SEVG - PIA Dimensions 60/40 Portfolio - R2	6.78	426.44	5.26	9.87	0.59	2.85	USD
SEVG - PIA Dimensions 50/50 Portfolio - R2	6.21	360.59	4.61	8.22	0.53	2.37	USD
SEVG - PIA Dimensions 40/60 Portfolio - R2	5.61	298.33	3.98	6.65	0.47	1.92	USD
SEVG - PIA Dimensions 20/80 Portfolio - R2	4.28	189.23	2.89	3.62	0.36	1.05	USD

\*Annualized number is presented as an approximation by multiplying the monthly number by the square root of the number of periods in a year. Please note that the number computed from annual data may differ materially from this estimate.

**Performance data shown represents past performance. Past performance is no guarantee of future results and current performance may be higher or lower than the performance shown. The investment return and principal value of an investment will fluctuate so that an investor's shares, when redeemed, may be worth more or less than their original cost. Average annual total returns include reinvestment of dividends and capital gains. To obtain Dimensional Fund performance data current to the most recent month-end access our website at [www.dimensionalfund.com](http://www.dimensionalfund.com).**

See Standardized Performance Data and Disclosures. Performance for periods greater than one year are annualized unless specified otherwise. Indices are not available for direct investment; therefore, their performance does not reflect the expenses associate with the management of an actual portfolio. Prior to listing date the following ETFs operated as mutual funds: DFUS, DFAC, DFAS, DFAT listing date 6/14/21; DFAX, DFIV listing date 9/13/21; and DFUV listing date 5/9/22. The NAVs of the predecessor mutual funds are used for both NAV and market price performance from inception to listing.

# Growth Of Wealth

Monthly: 3/1/2000 - 6/30/2025



Performance data shown represents past performance. Past performance is no guarantee of future results and current performance may be higher or lower than the performance shown. The investment return and principal value of an investment will fluctuate so that an investor's shares, when redeemed, may be worth more or less than their original cost. Average annual total returns include reinvestment of dividends and capital gains. To obtain Dimensional Fund performance data current to the most recent month-end access our website at [www.dimensionalfund.com](http://www.dimensionalfund.com). See Standardized Performance Data and Disclosures. Performance for periods greater than one year are annualized unless specified otherwise. Indices are not available for direct investment; therefore, their performance does not reflect the expenses associate with the management of an actual portfolio. Prior to listing date the following ETFs operated as mutual funds: DFUS, DFAC, DFAS, DFAT listing date 6/14/21; DFAX, DFIV listing date 9/13/21; and DFUV listing date 5/9/22. The NAVs of the predecessor mutual funds are used for both NAV and market price performance from inception to listing.

# Periodic Returns

Monthly: 3/1/2000 - 6/30/2025

Rates of Return (%)							
	SEVG - PIA Dimensions 100/0 Portfolio - R2	SEVG - PIA Dimensions 80/20 Portfolio - R2	SEVG - PIA Dimensions 70/30 Portfolio - R2	SEVG - PIA Dimensions 60/40 Portfolio - R2	SEVG - PIA Dimensions 50/50 Portfolio - R2	SEVG - PIA Dimensions 40/60 Portfolio - R2	SEVG - PIA Dimensions 20/80 Portfolio - R2
03/2000	6.32	5.27	4.68	4.09	3.52	2.96	1.76
04/2000	-2.12	-1.61	-1.36	-1.11	-0.84	-0.56	-0.06
05/2000	-1.39	-1.12	-0.93	-0.74	-0.58	-0.42	-0.07
06/2000	1.31	1.06	1.04	1.01	0.91	0.82	0.73
07/2000	-0.27	-0.06	0.01	0.09	0.20	0.30	0.45
08/2000	3.73	3.17	2.84	2.50	2.19	1.87	1.20
09/2000	-3.01	-2.35	-1.98	-1.61	-1.24	-0.86	-0.11
10/2000	-1.14	-0.73	-0.57	-0.40	-0.22	-0.03	0.28
11/2000	-3.93	-3.14	-2.65	-2.16	-1.71	-1.26	-0.32
12/2000	5.67	4.54	4.04	3.55	3.11	2.66	1.70
01/2001	3.91	3.30	2.98	2.66	2.36	2.06	1.43
02/2001	-3.53	-2.85	-2.41	-1.98	-1.56	-1.14	-0.29
03/2001	-5.12	-4.02	-3.46	-2.90	-2.34	-1.77	-0.66
04/2001	6.22	5.01	4.40	3.80	3.21	2.62	1.47
05/2001	1.44	1.23	1.14	1.04	0.94	0.85	0.63
06/2001	-0.20	-0.21	-0.17	-0.13	-0.07	-0.02	0.04

Continued on next page

**Performance data shown represents past performance. Past performance is no guarantee of future results and current performance may be higher or lower than the performance shown. The investment return and principal value of an investment will fluctuate so that an investor's shares, when redeemed, may be worth more or less than their original cost. Average annual total returns include reinvestment of dividends and capital gains. To obtain Dimensional Fund performance data current to the most recent month-end access our website at [www.dimensionalfund.com](http://www.dimensionalfund.com).**

See Standardized Performance Data and Disclosures. Performance for periods greater than one year are annualized unless specified otherwise. Indices are not available for direct investment; therefore, their performance does not reflect the expenses associate with the management of an actual portfolio. Prior to listing date the following ETFs operated as mutual funds: DFUS, DFAC, DFAS, DFAT listing date 6/14/21; DFAX, DFIV listing date 9/13/21; and DFUV listing date 5/9/22. The NAVs of the predecessor mutual funds are used for both NAV and market price performance from inception to listing.

# Periodic Returns

Monthly: 3/1/2000 - 6/30/2025

Rates of Return (%)							
	SEVG - PIA Dimensions 100/0 Portfolio - R2	SEVG - PIA Dimensions 80/20 Portfolio - R2	SEVG - PIA Dimensions 70/30 Portfolio - R2	SEVG - PIA Dimensions 60/40 Portfolio - R2	SEVG - PIA Dimensions 50/50 Portfolio - R2	SEVG - PIA Dimensions 40/60 Portfolio - R2	SEVG - PIA Dimensions 20/80 Portfolio - R2
07/2001	-1.48	-1.03	-0.81	-0.60	-0.37	-0.14	0.29
08/2001	-2.09	-1.68	-1.35	-1.03	-0.75	-0.46	0.14
09/2001	-11.40	-8.66	-7.37	-6.10	-4.85	-3.61	-1.12
10/2001	2.05	1.81	1.70	1.59	1.50	1.41	1.24
11/2001	7.00	5.34	4.50	3.69	2.95	2.23	0.79
12/2001	2.80	2.10	1.77	1.45	1.17	0.91	0.30
01/2002	0.06	0.10	0.13	0.17	0.20	0.23	0.27
02/2002	0.31	0.33	0.39	0.46	0.51	0.56	0.67
03/2002	5.61	4.14	3.46	2.77	2.10	1.42	0.04
04/2002	0.05	0.14	0.31	0.49	0.66	0.82	1.16
05/2002	0.20	0.27	0.36	0.44	0.47	0.49	0.65
06/2002	-4.62	-3.62	-3.05	-2.48	-1.91	-1.34	-0.17
07/2002	-9.43	-7.13	-6.01	-4.89	-3.82	-2.75	-0.52
08/2002	0.42	0.58	0.65	0.71	0.77	0.83	0.95
09/2002	-9.79	-7.30	-6.10	-4.92	-3.78	-2.67	-0.51
10/2002	3.59	2.82	2.38	1.97	1.60	1.25	0.57

Continued on next page

**Performance data shown represents past performance. Past performance is no guarantee of future results and current performance may be higher or lower than the performance shown. The investment return and principal value of an investment will fluctuate so that an investor's shares, when redeemed, may be worth more or less than their original cost. Average annual total returns include reinvestment of dividends and capital gains. To obtain Dimensional Fund performance data current to the most recent month-end access our website at [www.dimensionalfund.com](http://www.dimensionalfund.com).**

See Standardized Performance Data and Disclosures. Performance for periods greater than one year are annualized unless specified otherwise. Indices are not available for direct investment; therefore, their performance does not reflect the expenses associate with the management of an actual portfolio. Prior to listing date the following ETFs operated as mutual funds: DFUS, DFAC, DFAS, DFAT listing date 6/14/21; DFAX, DFIV listing date 9/13/21; and DFUV listing date 5/9/22. The NAVs of the predecessor mutual funds are used for both NAV and market price performance from inception to listing.

# Periodic Returns

Monthly: 3/1/2000 - 6/30/2025

Rates of Return (%)							
	SEVG - PIA Dimensions 100/0 Portfolio - R2	SEVG - PIA Dimensions 80/20 Portfolio - R2	SEVG - PIA Dimensions 70/30 Portfolio - R2	SEVG - PIA Dimensions 60/40 Portfolio - R2	SEVG - PIA Dimensions 50/50 Portfolio - R2	SEVG - PIA Dimensions 40/60 Portfolio - R2	SEVG - PIA Dimensions 20/80 Portfolio - R2
11/2002	6.51	4.78	3.98	3.21	2.51	1.84	0.50
12/2002	-3.68	-2.50	-1.89	-1.29	-0.75	-0.22	0.85
01/2003	-2.26	-1.78	-1.54	-1.32	-1.14	-0.96	-0.57
02/2003	-1.88	-1.14	-0.79	-0.46	-0.16	0.12	0.69
03/2003	-0.46	-0.32	-0.28	-0.24	-0.19	-0.14	-0.05
04/2003	9.72	7.77	6.84	5.91	4.99	4.06	2.19
05/2003	7.68	6.48	5.93	5.38	4.81	4.24	3.04
06/2003	2.38	1.89	1.68	1.46	1.21	0.95	0.46
07/2003	3.51	2.44	1.94	1.43	0.89	0.34	-0.85
08/2003	3.84	3.12	2.78	2.42	2.06	1.67	0.84
09/2003	0.81	0.94	1.08	1.23	1.34	1.45	1.79
10/2003	7.01	5.64	4.95	4.22	3.47	2.69	0.94
11/2003	2.21	1.84	1.65	1.45	1.26	1.06	0.56
12/2003	6.19	5.34	4.89	4.41	3.88	3.33	2.10
01/2004	3.00	2.60	2.43	2.24	2.03	1.79	1.28
02/2004	2.42	2.18	2.07	1.94	1.79	1.63	1.29

Continued on next page

**Performance data shown represents past performance. Past performance is no guarantee of future results and current performance may be higher or lower than the performance shown. The investment return and principal value of an investment will fluctuate so that an investor's shares, when redeemed, may be worth more or less than their original cost. Average annual total returns include reinvestment of dividends and capital gains. To obtain Dimensional Fund performance data current to the most recent month-end access our website at [www.dimensionalfund.com](http://www.dimensionalfund.com).**

See Standardized Performance Data and Disclosures. Performance for periods greater than one year are annualized unless specified otherwise. Indices are not available for direct investment; therefore, their performance does not reflect the expenses associate with the management of an actual portfolio. Prior to listing date the following ETFs operated as mutual funds: DFUS, DFAC, DFAS, DFAT listing date 6/14/21; DFAX, DFIV listing date 9/13/21; and DFUV listing date 5/9/22. The NAVs of the predecessor mutual funds are used for both NAV and market price performance from inception to listing.

# Periodic Returns

Monthly: 3/1/2000 - 6/30/2025

Rates of Return (%)							
	SEVG - PIA Dimensions 100/0 Portfolio - R2	SEVG - PIA Dimensions 80/20 Portfolio - R2	SEVG - PIA Dimensions 70/30 Portfolio - R2	SEVG - PIA Dimensions 60/40 Portfolio - R2	SEVG - PIA Dimensions 50/50 Portfolio - R2	SEVG - PIA Dimensions 40/60 Portfolio - R2	SEVG - PIA Dimensions 20/80 Portfolio - R2
03/2004	0.75	0.70	0.72	0.75	0.75	0.76	0.81
04/2004	-3.63	-3.35	-3.23	-3.11	-2.99	-2.88	-2.64
05/2004	0.69	0.48	0.37	0.25	0.15	0.05	-0.17
06/2004	3.22	2.54	2.25	1.95	1.66	1.36	0.76
07/2004	-3.37	-2.56	-2.17	-1.77	-1.37	-0.98	-0.16
08/2004	0.93	1.05	1.12	1.18	1.24	1.29	1.42
09/2004	2.97	2.34	2.05	1.77	1.50	1.22	0.65
10/2004	2.32	1.94	1.78	1.61	1.43	1.24	0.90
11/2004	7.09	5.47	4.71	3.95	3.18	2.40	0.84
12/2004	4.20	3.51	3.16	2.82	2.44	2.07	1.31
01/2005	-1.83	-1.51	-1.30	-1.09	-0.90	-0.72	-0.26
02/2005	3.60	2.86	2.49	2.12	1.73	1.33	0.52
03/2005	-2.16	-1.80	-1.62	-1.44	-1.27	-1.09	-0.74
04/2005	-3.02	-2.14	-1.72	-1.31	-0.92	-0.53	0.29
05/2005	2.87	2.44	2.21	1.98	1.79	1.60	1.15
06/2005	2.18	1.79	1.63	1.47	1.31	1.16	0.84

Continued on next page

**Performance data shown represents past performance. Past performance is no guarantee of future results and current performance may be higher or lower than the performance shown. The investment return and principal value of an investment will fluctuate so that an investor's shares, when redeemed, may be worth more or less than their original cost. Average annual total returns include reinvestment of dividends and capital gains. To obtain Dimensional Fund performance data current to the most recent month-end access our website at [www.dimensionalfund.com](http://www.dimensionalfund.com).**

See Standardized Performance Data and Disclosures. Performance for periods greater than one year are annualized unless specified otherwise. Indices are not available for direct investment; therefore, their performance does not reflect the expenses associate with the management of an actual portfolio. Prior to listing date the following ETFs operated as mutual funds: DFUS, DFAC, DFAS, DFAT listing date 6/14/21; DFAX, DFIV listing date 9/13/21; and DFUV listing date 5/9/22. The NAVs of the predecessor mutual funds are used for both NAV and market price performance from inception to listing.

# Periodic Returns

Monthly: 3/1/2000 - 6/30/2025

Rates of Return (%)							
	SEVG - PIA Dimensions 100/0 Portfolio - R2	SEVG - PIA Dimensions 80/20 Portfolio - R2	SEVG - PIA Dimensions 70/30 Portfolio - R2	SEVG - PIA Dimensions 60/40 Portfolio - R2	SEVG - PIA Dimensions 50/50 Portfolio - R2	SEVG - PIA Dimensions 40/60 Portfolio - R2	SEVG - PIA Dimensions 20/80 Portfolio - R2
07/2005	4.99	3.85	3.30	2.76	2.22	1.68	0.59
08/2005	0.22	0.29	0.36	0.43	0.48	0.52	0.67
09/2005	2.00	1.48	1.22	0.96	0.69	0.43	-0.09
10/2005	-2.62	-2.16	-1.93	-1.69	-1.46	-1.22	-0.74
11/2005	3.82	3.13	2.77	2.41	2.06	1.70	0.96
12/2005	2.14	1.70	1.53	1.36	1.15	0.95	0.59
01/2006	6.34	5.08	4.51	3.92	3.32	2.71	1.46
02/2006	0.07	0.10	0.12	0.15	0.15	0.16	0.20
03/2006	3.07	2.35	2.04	1.73	1.41	1.10	0.47
04/2006	2.91	2.35	2.09	1.84	1.56	1.28	0.76
05/2006	-4.18	-3.26	-2.82	-2.37	-1.91	-1.44	-0.50
06/2006	-0.10	-0.03	-0.01	0.01	0.05	0.08	0.12
07/2006	-0.22	-0.04	0.05	0.13	0.20	0.27	0.44
08/2006	2.49	2.13	1.96	1.79	1.62	1.45	1.10
09/2006	1.66	1.44	1.31	1.18	1.05	0.91	0.64
10/2006	4.60	3.75	3.34	2.93	2.52	2.10	1.26

Continued on next page

**Performance data shown represents past performance. Past performance is no guarantee of future results and current performance may be higher or lower than the performance shown. The investment return and principal value of an investment will fluctuate so that an investor's shares, when redeemed, may be worth more or less than their original cost. Average annual total returns include reinvestment of dividends and capital gains. To obtain Dimensional Fund performance data current to the most recent month-end access our website at [www.dimensionalfund.com](http://www.dimensionalfund.com).**

See Standardized Performance Data and Disclosures. Performance for periods greater than one year are annualized unless specified otherwise. Indices are not available for direct investment; therefore, their performance does not reflect the expenses associate with the management of an actual portfolio. Prior to listing date the following ETFs operated as mutual funds: DFUS, DFAC, DFAS, DFAT listing date 6/14/21; DFAX, DFIV listing date 9/13/21; and DFUV listing date 5/9/22. The NAVs of the predecessor mutual funds are used for both NAV and market price performance from inception to listing.

# Periodic Returns

Monthly: 3/1/2000 - 6/30/2025

Rates of Return (%)							
	SEVG - PIA Dimensions 100/0 Portfolio - R2	SEVG - PIA Dimensions 80/20 Portfolio - R2	SEVG - PIA Dimensions 70/30 Portfolio - R2	SEVG - PIA Dimensions 60/40 Portfolio - R2	SEVG - PIA Dimensions 50/50 Portfolio - R2	SEVG - PIA Dimensions 40/60 Portfolio - R2	SEVG - PIA Dimensions 20/80 Portfolio - R2
11/2006	3.30	2.70	2.43	2.16	1.87	1.58	0.99
12/2006	1.98	1.64	1.49	1.34	1.16	0.97	0.63
01/2007	2.34	2.00	1.83	1.65	1.47	1.28	0.90
02/2007	-0.60	-0.46	-0.35	-0.24	-0.14	-0.04	0.20
03/2007	1.75	1.43	1.31	1.18	1.03	0.89	0.63
04/2007	3.78	3.11	2.79	2.42	2.06	1.71	1.01
05/2007	3.80	3.11	2.79	2.43	2.07	1.75	1.03
06/2007	-1.15	-0.92	-0.73	-0.64	-0.53	-0.35	-0.07
07/2007	-3.48	-2.72	-2.30	-1.92	-1.54	-1.16	-0.33
08/2007	-0.61	-0.30	-0.23	-0.09	0.06	0.16	0.41
09/2007	3.69	3.02	2.69	2.34	2.01	1.64	0.95
10/2007	3.16	2.61	2.38	2.12	1.85	1.57	1.06
11/2007	-6.06	-4.81	-4.18	-3.61	-2.99	-2.34	-1.07
12/2007	-1.31	-0.93	-0.76	-0.60	-0.44	-0.25	0.08
01/2008	-6.34	-4.90	-4.25	-3.54	-2.83	-2.17	-0.79
02/2008	-1.38	-1.07	-0.86	-0.68	-0.51	-0.34	0.01

Continued on next page

**Performance data shown represents past performance. Past performance is no guarantee of future results and current performance may be higher or lower than the performance shown. The investment return and principal value of an investment will fluctuate so that an investor's shares, when redeemed, may be worth more or less than their original cost. Average annual total returns include reinvestment of dividends and capital gains. To obtain Dimensional Fund performance data current to the most recent month-end access our website at [www.dimensionalfund.com](http://www.dimensionalfund.com).**

See Standardized Performance Data and Disclosures. Performance for periods greater than one year are annualized unless specified otherwise. Indices are not available for direct investment; therefore, their performance does not reflect the expenses associate with the management of an actual portfolio. Prior to listing date the following ETFs operated as mutual funds: DFUS, DFAC, DFAS, DFAT listing date 6/14/21; DFAX, DFIV listing date 9/13/21; and DFUV listing date 5/9/22. The NAVs of the predecessor mutual funds are used for both NAV and market price performance from inception to listing.

# Periodic Returns

Monthly: 3/1/2000 - 6/30/2025

Rates of Return (%)							
	SEVG - PIA Dimensions 100/0 Portfolio - R2	SEVG - PIA Dimensions 80/20 Portfolio - R2	SEVG - PIA Dimensions 70/30 Portfolio - R2	SEVG - PIA Dimensions 60/40 Portfolio - R2	SEVG - PIA Dimensions 50/50 Portfolio - R2	SEVG - PIA Dimensions 40/60 Portfolio - R2	SEVG - PIA Dimensions 20/80 Portfolio - R2
03/2008	-0.34	-0.26	-0.24	-0.17	-0.11	-0.10	0.01
04/2008	4.76	3.78	3.25	2.67	2.15	1.59	0.55
05/2008	1.98	1.58	1.37	1.13	0.90	0.71	0.30
06/2008	-9.69	-7.81	-6.84	-5.90	-4.92	-3.92	-1.88
07/2008	-0.85	-0.55	-0.47	-0.31	-0.17	-0.02	0.25
08/2008	-0.23	-0.01	-0.00	0.09	0.16	0.25	0.40
09/2008	-9.87	-7.94	-7.10	-6.17	-5.24	-4.37	-2.61
10/2008	-22.13	-16.96	-14.47	-12.19	-9.96	-7.68	-3.46
11/2008	-9.04	-6.29	-4.98	-3.87	-2.88	-1.89	-0.24
12/2008	5.36	4.13	3.59	3.21	2.84	2.45	1.91
01/2009	-11.04	-7.88	-6.52	-5.35	-4.29	-3.30	-1.60
02/2009	-11.79	-8.19	-6.68	-5.43	-4.30	-3.26	-1.55
03/2009	9.70	6.50	5.32	4.29	3.39	2.65	1.34
04/2009	16.33	13.24	11.70	10.09	8.54	6.98	3.90
05/2009	9.57	7.92	7.05	6.25	5.34	4.52	2.57
06/2009	-0.51	-0.33	-0.24	-0.16	-0.06	0.07	0.30

Continued on next page

**Performance data shown represents past performance. Past performance is no guarantee of future results and current performance may be higher or lower than the performance shown. The investment return and principal value of an investment will fluctuate so that an investor's shares, when redeemed, may be worth more or less than their original cost. Average annual total returns include reinvestment of dividends and capital gains. To obtain Dimensional Fund performance data current to the most recent month-end access our website at [www.dimensionalfund.com](http://www.dimensionalfund.com).**

See Standardized Performance Data and Disclosures. Performance for periods greater than one year are annualized unless specified otherwise. Indices are not available for direct investment; therefore, their performance does not reflect the expenses associate with the management of an actual portfolio. Prior to listing date the following ETFs operated as mutual funds: DFUS, DFAC, DFAS, DFAT listing date 6/14/21; DFAX, DFIV listing date 9/13/21; and DFUV listing date 5/9/22. The NAVs of the predecessor mutual funds are used for both NAV and market price performance from inception to listing.

# Periodic Returns

Monthly: 3/1/2000 - 6/30/2025

Rates of Return (%)							
	SEVG - PIA Dimensions 100/0 Portfolio - R2	SEVG - PIA Dimensions 80/20 Portfolio - R2	SEVG - PIA Dimensions 70/30 Portfolio - R2	SEVG - PIA Dimensions 60/40 Portfolio - R2	SEVG - PIA Dimensions 50/50 Portfolio - R2	SEVG - PIA Dimensions 40/60 Portfolio - R2	SEVG - PIA Dimensions 20/80 Portfolio - R2
07/2009	10.17	8.59	7.75	6.90	5.99	5.11	3.08
08/2009	5.43	4.80	4.45	3.95	3.56	2.96	2.03
09/2009	5.27	4.58	4.20	3.76	3.33	2.85	1.82
10/2009	-3.98	-3.33	-2.97	-2.60	-2.19	-1.79	-0.78
11/2009	4.13	3.67	3.41	3.14	2.85	2.48	1.78
12/2009	3.38	2.74	2.40	1.96	1.55	1.09	0.10
01/2010	-3.68	-3.02	-2.66	-2.25	-1.82	-1.39	-0.32
02/2010	2.62	2.31	2.15	1.95	1.76	1.48	1.01
03/2010	7.65	6.53	5.92	5.26	4.55	3.79	2.03
04/2010	2.39	2.06	1.89	1.66	1.49	1.25	0.92
05/2010	-9.51	-7.54	-6.56	-5.61	-4.61	-3.68	-1.68
06/2010	-4.82	-3.65	-3.09	-2.57	-2.02	-1.46	-0.41
07/2010	8.87	7.14	6.31	5.49	4.71	3.97	2.52
08/2010	-4.94	-3.66	-3.04	-2.51	-1.91	-1.40	-0.22
09/2010	10.44	8.15	7.05	6.04	5.00	4.08	2.12
10/2010	3.64	3.01	2.70	2.38	2.07	1.75	1.15

Continued on next page

**Performance data shown represents past performance. Past performance is no guarantee of future results and current performance may be higher or lower than the performance shown. The investment return and principal value of an investment will fluctuate so that an investor's shares, when redeemed, may be worth more or less than their original cost. Average annual total returns include reinvestment of dividends and capital gains. To obtain Dimensional Fund performance data current to the most recent month-end access our website at [www.dimensionalfund.com](http://www.dimensionalfund.com).**

See Standardized Performance Data and Disclosures. Performance for periods greater than one year are annualized unless specified otherwise. Indices are not available for direct investment; therefore, their performance does not reflect the expenses associate with the management of an actual portfolio. Prior to listing date the following ETFs operated as mutual funds: DFUS, DFAC, DFAS, DFAT listing date 6/14/21; DFAX, DFIV listing date 9/13/21; and DFUV listing date 5/9/22. The NAVs of the predecessor mutual funds are used for both NAV and market price performance from inception to listing.

# Periodic Returns

Monthly: 3/1/2000 - 6/30/2025

Rates of Return (%)							
	SEVG - PIA Dimensions 100/0 Portfolio - R2	SEVG - PIA Dimensions 80/20 Portfolio - R2	SEVG - PIA Dimensions 70/30 Portfolio - R2	SEVG - PIA Dimensions 60/40 Portfolio - R2	SEVG - PIA Dimensions 50/50 Portfolio - R2	SEVG - PIA Dimensions 40/60 Portfolio - R2	SEVG - PIA Dimensions 20/80 Portfolio - R2
11/2010	-1.08	-1.03	-1.01	-0.96	-0.94	-0.88	-0.83
12/2010	8.60	6.68	5.72	4.81	3.85	2.92	1.01
01/2011	1.81	1.52	1.36	1.24	1.08	0.94	0.61
02/2011	3.68	3.00	2.65	2.29	1.93	1.53	0.77
03/2011	0.62	0.51	0.46	0.39	0.33	0.25	0.13
04/2011	3.48	3.00	2.76	2.48	2.23	1.98	1.50
05/2011	-2.12	-1.52	-1.21	-0.96	-0.66	-0.43	0.19
06/2011	-1.79	-1.45	-1.29	-1.11	-0.94	-0.76	-0.43
07/2011	-2.67	-1.87	-1.47	-1.15	-0.76	-0.42	0.37
08/2011	-8.37	-6.48	-5.55	-4.72	-3.82	-3.04	-1.28
09/2011	-10.94	-8.56	-7.42	-6.29	-5.22	-4.16	-2.19
10/2011	11.95	9.07	7.75	6.51	5.33	4.18	2.11
11/2011	-1.66	-1.51	-1.44	-1.35	-1.29	-1.22	-1.10
12/2011	-0.44	-0.22	-0.12	-0.04	0.06	0.09	0.28
01/2012	6.58	5.27	4.65	4.03	3.45	2.91	1.84
02/2012	4.63	3.61	3.12	2.73	2.26	1.85	0.96

Continued on next page

**Performance data shown represents past performance. Past performance is no guarantee of future results and current performance may be higher or lower than the performance shown. The investment return and principal value of an investment will fluctuate so that an investor's shares, when redeemed, may be worth more or less than their original cost. Average annual total returns include reinvestment of dividends and capital gains. To obtain Dimensional Fund performance data current to the most recent month-end access our website at [www.dimensionalfund.com](http://www.dimensionalfund.com).**

See Standardized Performance Data and Disclosures. Performance for periods greater than one year are annualized unless specified otherwise. Indices are not available for direct investment; therefore, their performance does not reflect the expenses associate with the management of an actual portfolio. Prior to listing date the following ETFs operated as mutual funds: DFUS, DFAC, DFAS, DFAT listing date 6/14/21; DFAX, DFIV listing date 9/13/21; and DFUV listing date 5/9/22. The NAVs of the predecessor mutual funds are used for both NAV and market price performance from inception to listing.

# Periodic Returns

Monthly: 3/1/2000 - 6/30/2025

Rates of Return (%)							
	SEVG - PIA Dimensions 100/0 Portfolio - R2	SEVG - PIA Dimensions 80/20 Portfolio - R2	SEVG - PIA Dimensions 70/30 Portfolio - R2	SEVG - PIA Dimensions 60/40 Portfolio - R2	SEVG - PIA Dimensions 50/50 Portfolio - R2	SEVG - PIA Dimensions 40/60 Portfolio - R2	SEVG - PIA Dimensions 20/80 Portfolio - R2
03/2012	1.21	1.01	0.91	0.76	0.66	0.50	0.31
04/2012	-1.77	-1.30	-1.06	-0.93	-0.69	-0.57	-0.10
05/2012	-8.54	-6.68	-5.76	-4.94	-4.03	-3.25	-1.44
06/2012	5.02	3.94	3.42	2.91	2.41	1.92	0.98
07/2012	0.46	0.59	0.65	0.66	0.71	0.69	0.81
08/2012	3.12	2.48	2.17	1.92	1.62	1.38	0.78
09/2012	3.36	2.65	2.30	2.03	1.68	1.40	0.73
10/2012	-0.13	-0.07	-0.04	-0.03	-0.00	-0.00	0.06
11/2012	0.98	0.82	0.74	0.67	0.59	0.54	0.38
12/2012	3.56	2.83	2.46	2.11	1.75	1.42	0.69
01/2013	5.09	4.02	3.48	3.00	2.45	1.94	0.83
02/2013	0.32	0.35	0.37	0.36	0.38	0.31	0.35
03/2013	2.92	2.40	2.13	1.85	1.57	1.22	0.65
04/2013	1.98	1.70	1.56	1.35	1.21	1.03	0.75
05/2013	0.99	0.57	0.36	0.33	0.12	0.05	-0.38
06/2013	-2.35	-2.06	-1.92	-1.77	-1.62	-1.48	-1.19

Continued on next page

**Performance data shown represents past performance. Past performance is no guarantee of future results and current performance may be higher or lower than the performance shown. The investment return and principal value of an investment will fluctuate so that an investor's shares, when redeemed, may be worth more or less than their original cost. Average annual total returns include reinvestment of dividends and capital gains. To obtain Dimensional Fund performance data current to the most recent month-end access our website at [www.dimensionalfund.com](http://www.dimensionalfund.com).**

See Standardized Performance Data and Disclosures. Performance for periods greater than one year are annualized unless specified otherwise. Indices are not available for direct investment; therefore, their performance does not reflect the expenses associate with the management of an actual portfolio. Prior to listing date the following ETFs operated as mutual funds: DFUS, DFAC, DFAS, DFAT listing date 6/14/21; DFAX, DFIV listing date 9/13/21; and DFUV listing date 5/9/22. The NAVs of the predecessor mutual funds are used for both NAV and market price performance from inception to listing.

# Periodic Returns

Monthly: 3/1/2000 - 6/30/2025

Rates of Return (%)							
	SEVG - PIA Dimensions 100/0 Portfolio - R2	SEVG - PIA Dimensions 80/20 Portfolio - R2	SEVG - PIA Dimensions 70/30 Portfolio - R2	SEVG - PIA Dimensions 60/40 Portfolio - R2	SEVG - PIA Dimensions 50/50 Portfolio - R2	SEVG - PIA Dimensions 40/60 Portfolio - R2	SEVG - PIA Dimensions 20/80 Portfolio - R2
07/2013	5.59	4.50	3.95	3.52	2.97	2.55	1.44
08/2013	-2.63	-2.23	-2.03	-1.76	-1.56	-1.26	-0.83
09/2013	5.50	4.55	4.06	3.57	3.07	2.66	1.65
10/2013	4.20	3.50	3.14	2.79	2.41	2.01	1.23
11/2013	1.99	1.59	1.38	1.29	1.07	0.94	0.47
12/2013	2.07	1.56	1.30	1.08	0.80	0.55	-0.05
01/2014	-3.60	-2.79	-2.37	-2.02	-1.57	-1.20	-0.21
02/2014	4.81	3.98	3.55	3.09	2.64	2.20	1.23
03/2014	1.07	0.82	0.69	0.56	0.42	0.24	-0.07
04/2014	0.37	0.41	0.42	0.39	0.40	0.34	0.38
05/2014	1.76	1.52	1.41	1.27	1.15	0.99	0.76
06/2014	2.41	1.90	1.64	1.39	1.13	0.88	0.37
07/2014	-2.05	-1.65	-1.45	-1.29	-1.08	-0.98	-0.57
08/2014	2.81	2.34	2.10	1.85	1.61	1.34	0.86
09/2014	-4.26	-3.53	-3.16	-2.73	-2.36	-1.97	-1.20
10/2014	1.46	1.34	1.28	1.07	1.01	0.82	0.70

Continued on next page

**Performance data shown represents past performance. Past performance is no guarantee of future results and current performance may be higher or lower than the performance shown. The investment return and principal value of an investment will fluctuate so that an investor's shares, when redeemed, may be worth more or less than their original cost. Average annual total returns include reinvestment of dividends and capital gains. To obtain Dimensional Fund performance data current to the most recent month-end access our website at [www.dimensionalfund.com](http://www.dimensionalfund.com).**

See Standardized Performance Data and Disclosures. Performance for periods greater than one year are annualized unless specified otherwise. Indices are not available for direct investment; therefore, their performance does not reflect the expenses associate with the management of an actual portfolio. Prior to listing date the following ETFs operated as mutual funds: DFUS, DFAC, DFAS, DFAT listing date 6/14/21; DFAX, DFIV listing date 9/13/21; and DFUV listing date 5/9/22. The NAVs of the predecessor mutual funds are used for both NAV and market price performance from inception to listing.

# Periodic Returns

Monthly: 3/1/2000 - 6/30/2025

Rates of Return (%)							
	SEVG - PIA Dimensions 100/0 Portfolio - R2	SEVG - PIA Dimensions 80/20 Portfolio - R2	SEVG - PIA Dimensions 70/30 Portfolio - R2	SEVG - PIA Dimensions 60/40 Portfolio - R2	SEVG - PIA Dimensions 50/50 Portfolio - R2	SEVG - PIA Dimensions 40/60 Portfolio - R2	SEVG - PIA Dimensions 20/80 Portfolio - R2
11/2014	0.66	0.63	0.61	0.58	0.56	0.51	0.47
12/2014	-0.73	-0.64	-0.60	-0.59	-0.54	-0.57	-0.48
01/2015	-2.15	-1.39	-1.02	-0.81	-0.44	-0.17	0.59
02/2015	5.81	4.43	3.75	3.25	2.57	2.06	0.72
03/2015	-1.16	-0.87	-0.73	-0.61	-0.47	-0.31	-0.01
04/2015	2.27	1.78	1.53	1.40	1.15	1.01	0.51
05/2015	0.44	0.33	0.28	0.26	0.20	0.18	0.07
06/2015	-1.77	-1.52	-1.38	-1.24	-1.10	-0.94	-0.67
07/2015	-0.81	-0.56	-0.44	-0.38	-0.26	-0.22	0.03
08/2015	-6.06	-4.86	-4.26	-3.68	-3.07	-2.50	-1.29
09/2015	-3.64	-2.68	-2.21	-1.88	-1.42	-1.14	-0.24
10/2015	7.01	5.45	4.70	4.01	3.29	2.59	1.22
11/2015	-0.10	-0.12	-0.14	-0.12	-0.14	-0.12	-0.14
12/2015	-2.84	-2.27	-1.99	-1.79	-1.51	-1.33	-0.79
01/2016	-6.18	-4.72	-3.99	-3.36	-2.63	-2.00	-0.55
02/2016	-0.38	-0.24	-0.17	-0.15	-0.09	-0.09	0.04

Continued on next page

**Performance data shown represents past performance. Past performance is no guarantee of future results and current performance may be higher or lower than the performance shown. The investment return and principal value of an investment will fluctuate so that an investor's shares, when redeemed, may be worth more or less than their original cost. Average annual total returns include reinvestment of dividends and capital gains. To obtain Dimensional Fund performance data current to the most recent month-end access our website at [www.dimensionalfund.com](http://www.dimensionalfund.com).**

See Standardized Performance Data and Disclosures. Performance for periods greater than one year are annualized unless specified otherwise. Indices are not available for direct investment; therefore, their performance does not reflect the expenses associate with the management of an actual portfolio. Prior to listing date the following ETFs operated as mutual funds: DFUS, DFAC, DFAS, DFAT listing date 6/14/21; DFAX, DFIV listing date 9/13/21; and DFUV listing date 5/9/22. The NAVs of the predecessor mutual funds are used for both NAV and market price performance from inception to listing.

# Periodic Returns

Monthly: 3/1/2000 - 6/30/2025

Rates of Return (%)							
	SEVG - PIA Dimensions 100/0 Portfolio - R2	SEVG - PIA Dimensions 80/20 Portfolio - R2	SEVG - PIA Dimensions 70/30 Portfolio - R2	SEVG - PIA Dimensions 60/40 Portfolio - R2	SEVG - PIA Dimensions 50/50 Portfolio - R2	SEVG - PIA Dimensions 40/60 Portfolio - R2	SEVG - PIA Dimensions 20/80 Portfolio - R2
03/2016	8.12	6.55	5.79	5.00	4.26	3.50	2.08
04/2016	2.15	1.72	1.50	1.35	1.14	0.99	0.57
05/2016	-0.09	-0.10	-0.10	-0.11	-0.11	-0.15	-0.16
06/2016	-0.54	-0.18	0.00	0.07	0.25	0.27	0.64
07/2016	4.58	3.70	3.27	2.82	2.38	1.95	1.08
08/2016	0.90	0.61	0.47	0.42	0.27	0.24	-0.06
09/2016	0.71	0.57	0.50	0.46	0.39	0.36	0.21
10/2016	-1.53	-1.35	-1.25	-1.03	-0.94	-0.70	-0.50
11/2016	3.88	2.85	2.33	1.95	1.42	1.00	-0.09
12/2016	2.45	2.01	1.79	1.55	1.31	1.07	0.58
01/2017	2.46	1.99	1.76	1.57	1.34	1.16	0.70
02/2017	2.09	1.75	1.58	1.38	1.21	0.96	0.61
03/2017	0.56	0.44	0.39	0.36	0.30	0.31	0.19
04/2017	1.09	0.97	0.90	0.84	0.77	0.72	0.58
05/2017	0.45	0.42	0.40	0.39	0.37	0.36	0.32
06/2017	1.39	1.08	0.93	0.79	0.64	0.50	0.18

Continued on next page

**Performance data shown represents past performance. Past performance is no guarantee of future results and current performance may be higher or lower than the performance shown. The investment return and principal value of an investment will fluctuate so that an investor's shares, when redeemed, may be worth more or less than their original cost. Average annual total returns include reinvestment of dividends and capital gains. To obtain Dimensional Fund performance data current to the most recent month-end access our website at [www.dimensionalfund.com](http://www.dimensionalfund.com).**

See Standardized Performance Data and Disclosures. Performance for periods greater than one year are annualized unless specified otherwise. Indices are not available for direct investment; therefore, their performance does not reflect the expenses associate with the management of an actual portfolio. Prior to listing date the following ETFs operated as mutual funds: DFUS, DFAC, DFAS, DFAT listing date 6/14/21; DFAX, DFIV listing date 9/13/21; and DFUV listing date 5/9/22. The NAVs of the predecessor mutual funds are used for both NAV and market price performance from inception to listing.

# Periodic Returns

Monthly: 3/1/2000 - 6/30/2025

Rates of Return (%)							
	SEVG - PIA Dimensions 100/0 Portfolio - R2	SEVG - PIA Dimensions 80/20 Portfolio - R2	SEVG - PIA Dimensions 70/30 Portfolio - R2	SEVG - PIA Dimensions 60/40 Portfolio - R2	SEVG - PIA Dimensions 50/50 Portfolio - R2	SEVG - PIA Dimensions 40/60 Portfolio - R2	SEVG - PIA Dimensions 20/80 Portfolio - R2
07/2017	2.74	2.28	2.04	1.83	1.58	1.38	0.88
08/2017	-0.26	-0.14	-0.08	-0.03	0.03	0.08	0.21
09/2017	3.10	2.41	2.06	1.79	1.42	1.17	0.41
10/2017	1.58	1.29	1.14	1.03	0.87	0.75	0.42
11/2017	2.20	1.79	1.58	1.34	1.11	0.83	0.35
12/2017	1.88	1.53	1.34	1.17	0.98	0.77	0.35
01/2018	4.61	3.53	3.00	2.57	2.04	1.59	0.52
02/2018	-4.81	-3.92	-3.46	-2.99	-2.53	-2.04	-1.10
03/2018	-1.10	-0.79	-0.63	-0.57	-0.41	-0.30	0.01
04/2018	0.84	0.66	0.56	0.48	0.38	0.33	0.15
05/2018	0.39	0.42	0.44	0.40	0.42	0.38	0.41
06/2018	-1.01	-0.77	-0.65	-0.60	-0.48	-0.42	-0.18
07/2018	2.96	2.35	2.05	1.80	1.50	1.22	0.62
08/2018	0.48	0.48	0.48	0.46	0.46	0.40	0.41
09/2018	-0.41	-0.39	-0.39	-0.33	-0.32	-0.27	-0.25
10/2018	-7.82	-6.19	-5.36	-4.62	-3.79	-3.10	-1.44

Continued on next page

**Performance data shown represents past performance. Past performance is no guarantee of future results and current performance may be higher or lower than the performance shown. The investment return and principal value of an investment will fluctuate so that an investor's shares, when redeemed, may be worth more or less than their original cost. Average annual total returns include reinvestment of dividends and capital gains. To obtain Dimensional Fund performance data current to the most recent month-end access our website at [www.dimensionalfund.com](http://www.dimensionalfund.com).**

See Standardized Performance Data and Disclosures. Performance for periods greater than one year are annualized unless specified otherwise. Indices are not available for direct investment; therefore, their performance does not reflect the expenses associate with the management of an actual portfolio. Prior to listing date the following ETFs operated as mutual funds: DFUS, DFAC, DFAS, DFAT listing date 6/14/21; DFAX, DFIV listing date 9/13/21; and DFUV listing date 5/9/22. The NAVs of the predecessor mutual funds are used for both NAV and market price performance from inception to listing.

# Periodic Returns

Monthly: 3/1/2000 - 6/30/2025

Rates of Return (%)							
	SEVG - PIA Dimensions 100/0 Portfolio - R2	SEVG - PIA Dimensions 80/20 Portfolio - R2	SEVG - PIA Dimensions 70/30 Portfolio - R2	SEVG - PIA Dimensions 60/40 Portfolio - R2	SEVG - PIA Dimensions 50/50 Portfolio - R2	SEVG - PIA Dimensions 40/60 Portfolio - R2	SEVG - PIA Dimensions 20/80 Portfolio - R2
11/2018	1.47	1.25	1.15	1.00	0.90	0.71	0.52
12/2018	-8.64	-6.67	-5.71	-4.83	-3.89	-2.99	-1.16
01/2019	8.84	7.20	6.38	5.53	4.71	3.86	2.23
02/2019	2.39	1.95	1.73	1.54	1.31	1.13	0.65
03/2019	-0.44	-0.19	-0.06	-0.01	0.12	0.14	0.42
04/2019	3.28	2.67	2.35	2.10	1.78	1.53	0.84
05/2019	-7.22	-5.73	-4.95	-4.32	-3.51	-2.86	-1.14
06/2019	6.56	5.31	4.68	4.15	3.51	2.94	1.64
07/2019	-0.31	-0.18	-0.11	-0.07	-0.00	-0.01	0.13
08/2019	-3.53	-2.70	-2.27	-1.99	-1.55	-1.28	-0.36
09/2019	3.54	2.82	2.45	2.13	1.76	1.43	0.66
10/2019	2.69	2.21	1.96	1.71	1.45	1.20	0.66
11/2019	2.25	1.82	1.59	1.44	1.21	1.01	0.52
12/2019	3.49	2.84	2.51	2.21	1.86	1.55	0.80
01/2020	-3.84	-2.94	-2.49	-2.15	-1.70	-1.37	-0.47
02/2020	-8.86	-6.96	-6.03	-5.14	-4.22	-3.32	-1.52

Continued on next page

**Performance data shown represents past performance. Past performance is no guarantee of future results and current performance may be higher or lower than the performance shown. The investment return and principal value of an investment will fluctuate so that an investor's shares, when redeemed, may be worth more or less than their original cost. Average annual total returns include reinvestment of dividends and capital gains. To obtain Dimensional Fund performance data current to the most recent month-end access our website at [www.dimensionalfund.com](http://www.dimensionalfund.com).**

See Standardized Performance Data and Disclosures. Performance for periods greater than one year are annualized unless specified otherwise. Indices are not available for direct investment; therefore, their performance does not reflect the expenses associate with the management of an actual portfolio. Prior to listing date the following ETFs operated as mutual funds: DFUS, DFAC, DFAS, DFAT listing date 6/14/21; DFAX, DFIV listing date 9/13/21; and DFUV listing date 5/9/22. The NAVs of the predecessor mutual funds are used for both NAV and market price performance from inception to listing.

# Periodic Returns

Monthly: 3/1/2000 - 6/30/2025

Rates of Return (%)							
	SEVG - PIA Dimensions 100/0 Portfolio - R2	SEVG - PIA Dimensions 80/20 Portfolio - R2	SEVG - PIA Dimensions 70/30 Portfolio - R2	SEVG - PIA Dimensions 60/40 Portfolio - R2	SEVG - PIA Dimensions 50/50 Portfolio - R2	SEVG - PIA Dimensions 40/60 Portfolio - R2	SEVG - PIA Dimensions 20/80 Portfolio - R2
03/2020	-20.05	-15.77	-13.72	-11.69	-9.75	-7.85	-4.25
04/2020	11.55	8.65	7.35	6.20	5.08	4.04	2.17
05/2020	4.10	3.15	2.70	2.31	1.91	1.58	0.88
06/2020	2.32	1.80	1.55	1.30	1.08	0.92	0.52
07/2020	3.69	2.89	2.51	2.12	1.77	1.39	0.75
08/2020	5.19	3.98	3.40	2.91	2.37	1.92	0.92
09/2020	-3.26	-2.55	-2.20	-1.87	-1.54	-1.26	-0.64
10/2020	-1.05	-0.81	-0.70	-0.56	-0.45	-0.29	-0.09
11/2020	14.68	11.33	9.74	8.29	6.79	5.45	2.66
12/2020	5.55	4.41	3.85	3.29	2.73	2.24	1.12
01/2021	0.51	0.41	0.35	0.31	0.26	0.25	0.14
02/2021	6.30	4.97	4.31	3.75	3.09	2.54	1.20
03/2021	4.58	3.68	3.23	2.80	2.33	1.86	0.89
04/2021	3.49	2.92	2.62	2.25	1.94	1.51	0.86
05/2021	3.02	2.48	2.20	1.97	1.67	1.44	0.80
06/2021	-0.89	-0.73	-0.64	-0.63	-0.55	-0.53	-0.34

Continued on next page

**Performance data shown represents past performance. Past performance is no guarantee of future results and current performance may be higher or lower than the performance shown. The investment return and principal value of an investment will fluctuate so that an investor's shares, when redeemed, may be worth more or less than their original cost. Average annual total returns include reinvestment of dividends and capital gains. To obtain Dimensional Fund performance data current to the most recent month-end access our website at [www.dimensionalfund.com](http://www.dimensionalfund.com).**

See Standardized Performance Data and Disclosures. Performance for periods greater than one year are annualized unless specified otherwise. Indices are not available for direct investment; therefore, their performance does not reflect the expenses associate with the management of an actual portfolio. Prior to listing date the following ETFs operated as mutual funds: DFUS, DFAC, DFAS, DFAT listing date 6/14/21; DFAX, DFIV listing date 9/13/21; and DFUV listing date 5/9/22. The NAVs of the predecessor mutual funds are used for both NAV and market price performance from inception to listing.

# Periodic Returns

Monthly: 3/1/2000 - 6/30/2025

Rates of Return (%)							
	SEVG - PIA Dimensions 100/0 Portfolio - R2	SEVG - PIA Dimensions 80/20 Portfolio - R2	SEVG - PIA Dimensions 70/30 Portfolio - R2	SEVG - PIA Dimensions 60/40 Portfolio - R2	SEVG - PIA Dimensions 50/50 Portfolio - R2	SEVG - PIA Dimensions 40/60 Portfolio - R2	SEVG - PIA Dimensions 20/80 Portfolio - R2
07/2021	-0.19	-0.02	0.07	0.08	0.17	0.17	0.37
08/2021	2.10	1.71	1.50	1.28	1.06	0.81	0.33
09/2021	-2.94	-2.57	-2.37	-2.09	-1.88	-1.53	-1.07
10/2021	4.23	3.38	2.95	2.45	1.99	1.46	0.44
11/2021	-3.16	-2.60	-2.30	-2.04	-1.72	-1.48	-0.77
12/2021	5.33	4.40	3.91	3.38	2.86	2.26	1.12
01/2022	-2.27	-2.11	-2.03	-1.80	-1.72	-1.50	-1.34
02/2022	-1.06	-0.95	-0.90	-0.82	-0.77	-0.70	-0.59
03/2022	1.25	0.64	0.34	-0.04	-0.33	-0.74	-1.34
04/2022	-6.25	-5.18	-4.64	-4.11	-3.57	-3.05	-1.96
05/2022	2.41	1.94	1.71	1.64	1.41	1.31	0.87
06/2022	-9.76	-7.93	-7.01	-6.16	-5.25	-4.39	-2.61
07/2022	6.21	5.05	4.49	3.89	3.35	2.77	1.77
08/2022	-3.32	-2.85	-2.62	-2.34	-2.11	-1.84	-1.42
09/2022	-9.64	-7.85	-6.97	-6.06	-5.21	-4.35	-2.74
10/2022	8.47	6.46	5.52	4.74	3.86	3.07	1.45

Continued on next page

**Performance data shown represents past performance. Past performance is no guarantee of future results and current performance may be higher or lower than the performance shown. The investment return and principal value of an investment will fluctuate so that an investor's shares, when redeemed, may be worth more or less than their original cost. Average annual total returns include reinvestment of dividends and capital gains. To obtain Dimensional Fund performance data current to the most recent month-end access our website at [www.dimensionalfund.com](http://www.dimensionalfund.com).**

See Standardized Performance Data and Disclosures. Performance for periods greater than one year are annualized unless specified otherwise. Indices are not available for direct investment; therefore, their performance does not reflect the expenses associate with the management of an actual portfolio. Prior to listing date the following ETFs operated as mutual funds: DFUS, DFAC, DFAS, DFAT listing date 6/14/21; DFAX, DFIV listing date 9/13/21; and DFUV listing date 5/9/22. The NAVs of the predecessor mutual funds are used for both NAV and market price performance from inception to listing.

# Periodic Returns

Monthly: 3/1/2000 - 6/30/2025

Rates of Return (%)							
	SEVG - PIA Dimensions 100/0 Portfolio - R2	SEVG - PIA Dimensions 80/20 Portfolio - R2	SEVG - PIA Dimensions 70/30 Portfolio - R2	SEVG - PIA Dimensions 60/40 Portfolio - R2	SEVG - PIA Dimensions 50/50 Portfolio - R2	SEVG - PIA Dimensions 40/60 Portfolio - R2	SEVG - PIA Dimensions 20/80 Portfolio - R2
11/2022	8.21	6.59	5.79	5.06	4.29	3.64	2.19
12/2022	-3.67	-2.91	-2.53	-2.16	-1.78	-1.39	-0.64
01/2023	7.70	6.33	5.64	4.94	4.25	3.60	2.23
02/2023	-2.57	-2.18	-1.98	-1.73	-1.53	-1.23	-0.81
03/2023	-0.77	-0.48	-0.33	-0.16	-0.01	0.15	0.46
04/2023	1.02	0.89	0.83	0.77	0.71	0.65	0.52
05/2023	-3.20	-2.54	-2.20	-1.88	-1.54	-1.20	-0.52
06/2023	6.45	5.12	4.46	3.88	3.22	2.66	1.33
07/2023	4.67	3.86	3.44	3.06	2.63	2.25	1.38
08/2023	-2.94	-2.31	-1.99	-1.65	-1.32	-0.98	-0.27
09/2023	-3.44	-2.78	-2.43	-2.00	-1.65	-1.21	-0.48
10/2023	-3.85	-3.00	-2.57	-2.15	-1.71	-1.32	-0.44
11/2023	7.96	6.49	5.76	4.96	4.23	3.45	2.01
12/2023	6.27	5.19	4.64	4.02	3.46	2.87	1.71
01/2024	-1.14	-0.85	-0.71	-0.49	-0.34	-0.18	0.11
02/2024	3.42	2.76	2.43	2.18	1.85	1.59	0.94

Continued on next page

**Performance data shown represents past performance. Past performance is no guarantee of future results and current performance may be higher or lower than the performance shown. The investment return and principal value of an investment will fluctuate so that an investor's shares, when redeemed, may be worth more or less than their original cost. Average annual total returns include reinvestment of dividends and capital gains. To obtain Dimensional Fund performance data current to the most recent month-end access our website at [www.dimensionalfund.com](http://www.dimensionalfund.com).**

See Standardized Performance Data and Disclosures. Performance for periods greater than one year are annualized unless specified otherwise. Indices are not available for direct investment; therefore, their performance does not reflect the expenses associate with the management of an actual portfolio. Prior to listing date the following ETFs operated as mutual funds: DFUS, DFAC, DFAS, DFAT listing date 6/14/21; DFAX, DFIV listing date 9/13/21; and DFUV listing date 5/9/22. The NAVs of the predecessor mutual funds are used for both NAV and market price performance from inception to listing.

# Periodic Returns

Monthly: 3/1/2000 - 6/30/2025

Rates of Return (%)							
	SEVG - PIA Dimensions 100/0 Portfolio - R2	SEVG - PIA Dimensions 80/20 Portfolio - R2	SEVG - PIA Dimensions 70/30 Portfolio - R2	SEVG - PIA Dimensions 60/40 Portfolio - R2	SEVG - PIA Dimensions 50/50 Portfolio - R2	SEVG - PIA Dimensions 40/60 Portfolio - R2	SEVG - PIA Dimensions 20/80 Portfolio - R2
03/2024	4.50	3.68	3.27	2.90	2.49	2.09	1.25
04/2024	-3.43	-2.73	-2.37	-1.95	-1.58	-1.14	-0.39
05/2024	4.40	3.62	3.23	2.83	2.44	2.08	1.28
06/2024	-0.83	-0.59	-0.46	-0.39	-0.26	-0.21	0.05
07/2024	4.48	3.74	3.36	2.94	2.56	2.16	1.38
08/2024	1.25	1.15	1.09	0.97	0.91	0.76	0.64
09/2024	1.61	1.42	1.32	1.16	1.06	0.90	0.68
10/2024	-2.50	-2.00	-1.75	-1.42	-1.16	-0.86	-0.30
11/2024	4.46	3.66	3.25	2.88	2.46	2.05	1.19
12/2024	-4.63	-3.76	-3.31	-2.80	-2.33	-1.75	-0.75
01/2025	3.36	2.75	2.44	2.19	1.88	1.62	1.01
02/2025	-0.02	0.06	0.10	0.14	0.18	0.21	0.29
03/2025	-1.87	-1.43	-1.21	-0.98	-0.76	-0.51	-0.06
04/2025	-0.62	-0.40	-0.29	-0.26	-0.15	-0.02	0.19
05/2025	4.99	4.04	3.57	3.13	2.66	2.27	1.33
06/2025	4.30	3.51	3.11	2.74	2.34	1.96	1.12

**Performance data shown represents past performance. Past performance is no guarantee of future results and current performance may be higher or lower than the performance shown. The investment return and principal value of an investment will fluctuate so that an investor's shares, when redeemed, may be worth more or less than their original cost. Average annual total returns include reinvestment of dividends and capital gains. To obtain Dimensional Fund performance data current to the most recent month-end access our website at [www.dimensionalfund.com](http://www.dimensionalfund.com).**

See Standardized Performance Data and Disclosures. Performance for periods greater than one year are annualized unless specified otherwise. Indices are not available for direct investment; therefore, their performance does not reflect the expenses associate with the management of an actual portfolio. Prior to listing date the following ETFs operated as mutual funds: DFUS, DFAC, DFAS, DFAT listing date 6/14/21; DFAX, DFIV listing date 9/13/21; and DFUV listing date 5/9/22. The NAVs of the predecessor mutual funds are used for both NAV and market price performance from inception to listing.

# Performance Summary Statistics

Monthly: 3/1/2000 - 6/30/2025

Rates of Return (%)							
	SEVG - PIA Dimensions 100/0 Portfolio - R2	SEVG - PIA Dimensions 80/20 Portfolio - R2	SEVG - PIA Dimensions 70/30 Portfolio - R2	SEVG - PIA Dimensions 60/40 Portfolio - R2	SEVG - PIA Dimensions 50/50 Portfolio - R2	SEVG - PIA Dimensions 40/60 Portfolio - R2	SEVG - PIA Dimensions 20/80 Portfolio - R2
<b>1-Year Total Return</b>	15.22	13.08	12.00	10.99	9.92	9.04	6.91
<b>3-Year Annualized Return</b>	14.84	12.46	11.29	10.33	9.17	8.28	5.99
<b>5-Year Annualized Return</b>	15.05	12.10	10.64	9.38	7.94	6.72	3.88
<b>10-Year Annualized Return</b>	8.71	7.33	6.63	5.97	5.23	4.53	2.99
<b>20-Year Annualized Return</b>	8.26	7.41	6.92	6.37	5.76	5.11	3.72
<b>Annualized Return</b>	8.55	7.71	7.27	6.78	6.21	5.61	4.28
<b>Annualized Standard Deviation*</b>	16.84	13.25	11.52	9.87	8.22	6.65	3.62
<b>Growth of Wealth</b>	7.99	6.56	5.91	5.26	4.61	3.98	2.89
<b>Highest 1-Year Return</b>	73.75	57.76	51.36	44.69	38.28	31.61	18.86
	(3/09-2/10)	(4/09-3/10)	(4/09-3/10)	(4/09-3/10)	(4/09-3/10)	(4/09-3/10)	(4/09-3/10)
<b>Lowest 1-Year Return</b>	-49.79	-39.19	-33.94	-28.80	-23.60	-18.30	-8.34
	(3/08-2/09)	(3/08-2/09)	(3/08-2/09)	(3/08-2/09)	(3/08-2/09)	(3/08-2/09)	(10/21-9/22)
<b>Highest 3-Year Annualized Return</b>	31.83	25.46	22.63	19.78	16.83	14.14	9.33
	(4/03-3/06)	(4/03-3/06)	(4/03-3/06)	(4/03-3/06)	(4/03-3/06)	(3/09-2/12)	(3/09-2/12)
<b>Lowest 3-Year Annualized Return</b>	-17.31	-11.98	-9.53	-7.33	-5.24	-3.20	-0.56
	(3/06-2/09)	(3/06-2/09)	(3/06-2/09)	(3/06-2/09)	(3/06-2/09)	(3/06-2/09)	(10/19-9/22)

\*Annualized number is presented as an approximation by multiplying the monthly number by the square root of the number of periods in a year. Please note that the number computed from annual data may differ materially from this estimate.

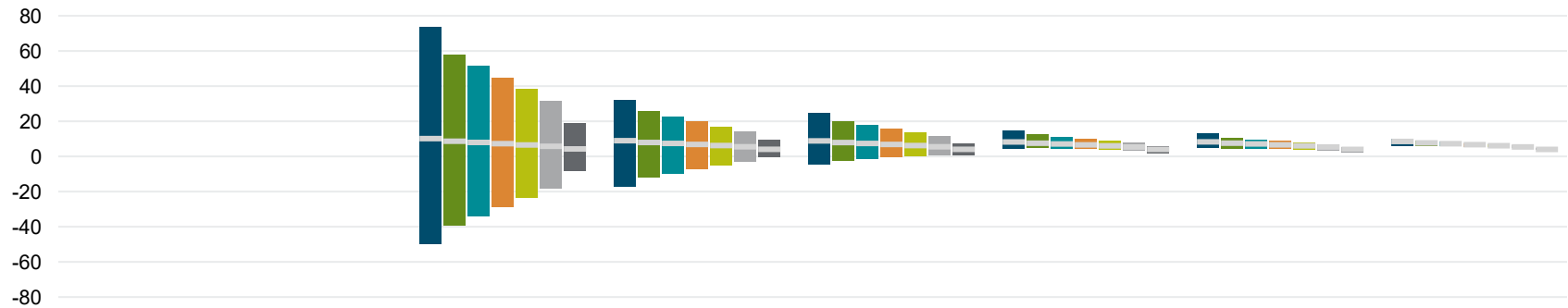
**Performance data shown represents past performance. Past performance is no guarantee of future results and current performance may be higher or lower than the performance shown. The investment return and principal value of an investment will fluctuate so that an investor's shares, when redeemed, may be worth more or less than their original cost. Average annual total returns include reinvestment of dividends and capital gains. To obtain Dimensional Fund performance data current to the most recent month-end access our website at [www.dimensionalfund.com](http://www.dimensionalfund.com).**

See Standardized Performance Data and Disclosures. Performance for periods greater than one year are annualized unless specified otherwise. Indices are not available for direct investment; therefore, their performance does not reflect the expenses associate with the management of an actual portfolio. Prior to listing date the following ETFs operated as mutual funds: DFUS, DFAC, DFAS, DFAT listing date 6/14/21; DFAX, DFIV listing date 9/13/21; and DFUV listing date 5/9/22. The NAVs of the predecessor mutual funds are used for both NAV and market price performance from inception to listing.

# Best and Worst

Monthly: 3/1/2000 - 6/30/2025

## Average Annualized Rolling Returns (%)



	1 Year	3 Years	5 Years	10 Years	15 Years	20 Years
<b>SEVG - PIA Dimensions 100/0 Portfolio - R2</b>	10.15	8.95	8.83	8.23	8.28	8.52
Best Return (start date)	73.75 (3/2009)	31.83 (4/2003)	24.43 (3/2009)	14.79 (3/2009)	12.80 (3/2009)	9.99 (2/2003)
Worst Return (start date)	-49.79 (3/2008)	-17.31 (3/2006)	-4.78 (3/2004)	4.60 (3/2006)	4.71 (10/2007)	5.88 (4/2000)
<b>SEVG - PIA Dimensions 80/20 Portfolio - R2</b>	8.66	7.93	7.89	7.51	7.55	7.69
Best Return (start date)	57.76 (4/2009)	25.46 (4/2003)	20.12 (3/2009)	12.39 (3/2009)	10.66 (3/2009)	8.79 (2/2003)
Worst Return (start date)	-39.19 (3/2008)	-11.98 (3/2006)	-2.35 (3/2004)	4.70 (4/2010)	4.61 (10/2007)	5.80 (4/2000)

Continued on next page

**Performance data shown represents past performance. Past performance is no guarantee of future results and current performance may be higher or lower than the performance shown. The investment return and principal value of an investment will fluctuate so that an investor's shares, when redeemed, may be worth more or less than their original cost. Average annual total returns include reinvestment of dividends and capital gains. To obtain Dimensional Fund performance data current to the most recent month-end access our website at [www.dimensionalfund.com](http://www.dimensionalfund.com).**

See Standardized Performance Data and Disclosures. Performance for periods greater than one year are annualized unless specified otherwise. Indices are not available for direct investment; therefore, their performance does not reflect the expenses associate with the management of an actual portfolio. Prior to listing date the following ETFs operated as mutual funds: DFUS, DFAC, DFAS, DFAT listing date 6/14/21; DFAX, DFIV listing date 9/13/21; and DFUV listing date 5/9/22. The NAVs of the predecessor mutual funds are used for both NAV and market price performance from inception to listing.

# Best and Worst

Monthly: 3/1/2000 - 6/30/2025

Average Annualized Rolling Returns (%)		1 Year	3 Years	5 Years	10 Years	15 Years	20 Years
SEVG - PIA Dimensions 70/30 Portfolio - R2		7.97	7.41	7.39	7.09	7.12	7.23
	Best Return (start date)	51.36 (4/2009)	22.63 (4/2003)	18.02 (3/2009)	11.18 (3/2009)	9.64 (2/2003)	8.23 (11/2001)
	Worst Return (start date)	-33.94 (3/2008)	-9.53 (3/2006)	-1.26 (3/2004)	4.46 (4/2010)	4.44 (10/2007)	5.72 (4/2000)
SEVG - PIA Dimensions 60/40 Portfolio - R2		7.27	6.83	6.82	6.58	6.60	6.69
	Best Return (start date)	44.69 (4/2009)	19.78 (4/2003)	15.88 (3/2009)	9.93 (3/2009)	8.82 (2/2003)	7.57 (11/2001)
	Worst Return (start date)	-28.80 (3/2008)	-7.33 (3/2006)	-0.38 (3/2004)	4.16 (4/2010)	4.19 (10/2007)	5.53 (4/2000)
SEVG - PIA Dimensions 50/50 Portfolio - R2		6.53	6.19	6.19	6.01	6.03	6.09
	Best Return (start date)	38.28 (4/2009)	16.83 (4/2003)	13.79 (3/2009)	8.81 (4/2003)	7.92 (2/2003)	6.87 (11/2001)
	Worst Return (start date)	-23.60 (3/2008)	-5.24 (3/2006)	0.37 (3/2004)	3.72 (11/2013)	3.89 (10/2007)	5.29 (4/2000)
SEVG - PIA Dimensions 40/60 Portfolio - R2		5.77	5.50	5.49	5.35	5.36	5.41
	Best Return (start date)	31.61 (4/2009)	14.14 (3/2009)	11.62 (3/2009)	7.81 (4/2003)	6.93 (2/2003)	6.07 (11/2001)
	Worst Return (start date)	-18.30 (3/2008)	-3.20 (3/2006)	1.05 (3/2004)	3.16 (11/2013)	3.49 (10/2007)	4.92 (1/2005)

Continued on next page

**Performance data shown represents past performance. Past performance is no guarantee of future results and current performance may be higher or lower than the performance shown. The investment return and principal value of an investment will fluctuate so that an investor's shares, when redeemed, may be worth more or less than their original cost. Average annual total returns include reinvestment of dividends and capital gains. To obtain Dimensional Fund performance data current to the most recent month-end access our website at [www.dimensionalfund.com](http://www.dimensionalfund.com).**

See Standardized Performance Data and Disclosures. Performance for periods greater than one year are annualized unless specified otherwise. Indices are not available for direct investment; therefore, their performance does not reflect the expenses associate with the management of an actual portfolio. Prior to listing date the following ETFs operated as mutual funds: DFUS, DFAC, DFAS, DFAT listing date 6/14/21; DFAX, DFIV listing date 9/13/21; and DFUV listing date 5/9/22. The NAVs of the predecessor mutual funds are used for both NAV and market price performance from inception to listing.

# Best and Worst

Monthly: 3/1/2000 - 6/30/2025

Average Annualized Rolling Returns (%)		1 Year	3 Years	5 Years	10 Years	15 Years	20 Years
<b>SEVG - PIA Dimensions 20/80 Portfolio - R2</b>		4.27	4.05	4.04	4.00	4.00	4.00
Best Return (start date)		18.86 (4/2009)	9.33 (3/2009)	7.43 (3/2009)	5.90 (11/2000)	5.26 (3/2000)	4.50 (4/2001)
Worst Return (start date)		-8.34 (10/2021)	-0.56 (10/2019)	0.58 (10/2017)	1.91 (10/2012)	2.63 (10/2007)	3.54 (3/2004)

**Performance data shown represents past performance. Past performance is no guarantee of future results and current performance may be higher or lower than the performance shown. The investment return and principal value of an investment will fluctuate so that an investor's shares, when redeemed, may be worth more or less than their original cost. Average annual total returns include reinvestment of dividends and capital gains. To obtain Dimensional Fund performance data current to the most recent month-end access our website at [www.dimensionalfund.com](http://www.dimensionalfund.com).**

See Standardized Performance Data and Disclosures. Performance for periods greater than one year are annualized unless specified otherwise. Indices are not available for direct investment; therefore, their performance does not reflect the expenses associate with the management of an actual portfolio. Prior to listing date the following ETFs operated as mutual funds: DFUS, DFAC, DFAS, DFAT listing date 6/14/21; DFAX, DFIV listing date 9/13/21; and DFUV listing date 5/9/22. The NAVs of the predecessor mutual funds are used for both NAV and market price performance from inception to listing.

# Up and Down Periods

Monthly: 3/1/2000 - 6/30/2025

## Rates of Return (%)

	Annualized Compound Return	Average Return	Annualized Standard Deviation*	Standard Deviation	Correlation	Currency
<b>For the 304 months in the period</b>						
SEVG - PIA Dimensions 100/0 Portfolio - R2	8.55	0.81	16.84	4.86	1.00	USD
SEVG - PIA Dimensions 80/20 Portfolio - R2	7.71	0.69	13.25	3.83	1.00	USD
SEVG - PIA Dimensions 70/30 Portfolio - R2	7.27	0.64	11.52	3.33	1.00	USD
SEVG - PIA Dimensions 60/40 Portfolio - R2	6.78	0.59	9.87	2.85	0.99	USD
SEVG - PIA Dimensions 50/50 Portfolio - R2	6.21	0.53	8.22	2.37	0.99	USD
SEVG - PIA Dimensions 40/60 Portfolio - R2	5.61	0.47	6.65	1.92	0.98	USD
SEVG - PIA Dimensions 20/80 Portfolio - R2	4.28	0.36	3.62	1.05	0.89	USD

\*Annualized number is presented as an approximation by multiplying the monthly number by the square root of the number of periods in a year. Please note that the number computed from annual data may differ materially from this estimate.

*Continued on next page*

**Performance data shown represents past performance. Past performance is no guarantee of future results and current performance may be higher or lower than the performance shown. The investment return and principal value of an investment will fluctuate so that an investor's shares, when redeemed, may be worth more or less than their original cost. Average annual total returns include reinvestment of dividends and capital gains. To obtain Dimensional Fund performance data current to the most recent month-end access our website at [www.dimensionalfund.com](http://www.dimensionalfund.com).**

See Standardized Performance Data and Disclosures. Performance for periods greater than one year are annualized unless specified otherwise. Indices are not available for direct investment; therefore, their performance does not reflect the expenses associate with the management of an actual portfolio. Prior to listing date the following ETFs operated as mutual funds: DFUS, DFAC, DFAS, DFAT listing date 6/14/21; DFAX, DFIV listing date 9/13/21; and DFUV listing date 5/9/22. The NAVs of the predecessor mutual funds are used for both NAV and market price performance from inception to listing.

# Up and Down Periods

Monthly: 3/1/2000 - 6/30/2025

Rates of Return (%)						
	Annualized Compound Return	Average Return	Annualized Standard Deviation*	Standard Deviation	Correlation	Currency
<b>For the 182 months in the period (59% of the total) where SEVG - PIA Dimensions 100/0 Portfolio - R2 had positive returns</b>						
SEVG - PIA Dimensions 100/0 Portfolio - R2	55.36	3.78	9.71	2.80	1.00	USD
SEVG - PIA Dimensions 80/20 Portfolio - R2	42.98	3.05	7.64	2.21	1.00	USD
SEVG - PIA Dimensions 70/30 Portfolio - R2	37.27	2.69	6.65	1.92	0.99	USD
SEVG - PIA Dimensions 60/40 Portfolio - R2	31.93	2.35	5.71	1.65	0.99	USD
SEVG - PIA Dimensions 50/50 Portfolio - R2	26.61	1.99	4.79	1.38	0.97	USD
SEVG - PIA Dimensions 40/60 Portfolio - R2	21.62	1.65	3.94	1.14	0.95	USD
SEVG - PIA Dimensions 20/80 Portfolio - R2	11.85	0.94	2.43	0.70	0.77	USD

\*Annualized number is presented as an approximation by multiplying the monthly number by the square root of the number of periods in a year. Please note that the number computed from annual data may differ materially from this estimate.

*Continued on next page*

**Performance data shown represents past performance. Past performance is no guarantee of future results and current performance may be higher or lower than the performance shown. The investment return and principal value of an investment will fluctuate so that an investor's shares, when redeemed, may be worth more or less than their original cost. Average annual total returns include reinvestment of dividends and capital gains. To obtain Dimensional Fund performance data current to the most recent month-end access our website at [www.dimensionalfund.com](http://www.dimensionalfund.com).**

See Standardized Performance Data and Disclosures. Performance for periods greater than one year are annualized unless specified otherwise. Indices are not available for direct investment; therefore, their performance does not reflect the expenses associate with the management of an actual portfolio. Prior to listing date the following ETFs operated as mutual funds: DFUS, DFAC, DFAS, DFAT listing date 6/14/21; DFAX, DFIV listing date 9/13/21; and DFUV listing date 5/9/22. The NAVs of the predecessor mutual funds are used for both NAV and market price performance from inception to listing.

# Up and Down Periods

Monthly: 3/1/2000 - 6/30/2025

Rates of Return (%)						
	Annualized Compound Return	Average Return	Annualized Standard Deviation*	Standard Deviation	Correlation	Currency
<b>For the 122 months in the period (40% of the total) where SEVG - PIA Dimensions 100/0 Portfolio - R2 had negative returns</b>						
SEVG - PIA Dimensions 100/0 Portfolio - R2	-36.42	-3.62	13.12	3.79	1.00	USD
SEVG - PIA Dimensions 80/20 Portfolio - R2	-29.42	-2.82	10.17	2.94	1.00	USD
SEVG - PIA Dimensions 70/30 Portfolio - R2	-25.75	-2.42	8.78	2.54	0.99	USD
SEVG - PIA Dimensions 60/40 Portfolio - R2	-22.12	-2.04	7.48	2.16	0.99	USD
SEVG - PIA Dimensions 50/50 Portfolio - R2	-18.27	-1.65	6.23	1.80	0.98	USD
SEVG - PIA Dimensions 40/60 Portfolio - R2	-14.45	-1.28	5.02	1.45	0.96	USD
SEVG - PIA Dimensions 20/80 Portfolio - R2	-6.07	-0.52	2.95	0.85	0.80	USD

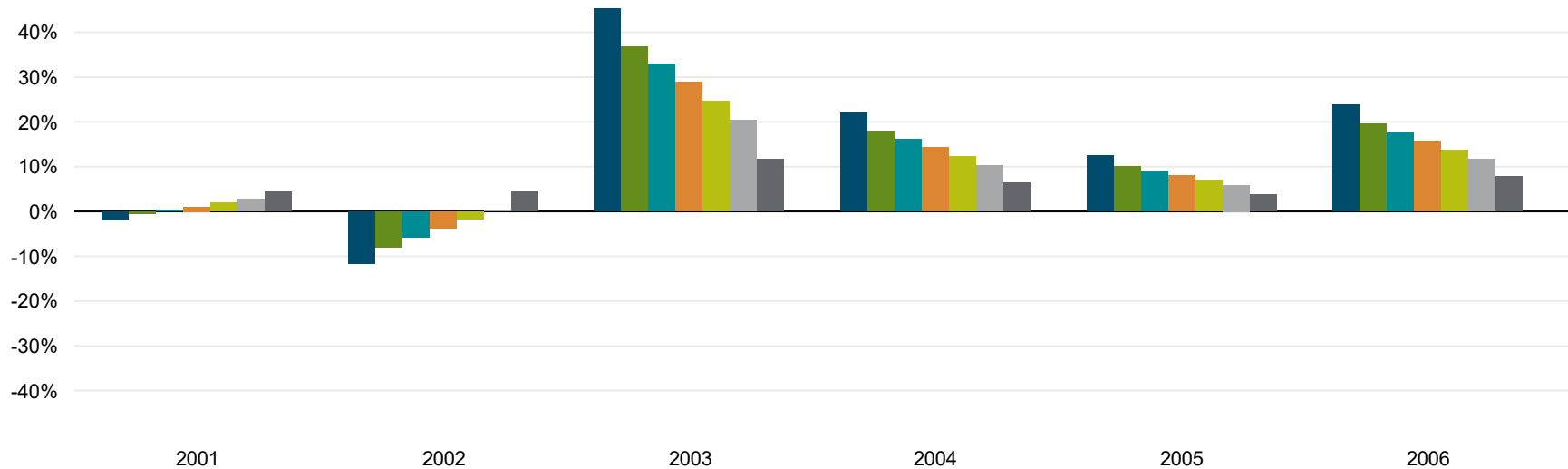
\*Annualized number is presented as an approximation by multiplying the monthly number by the square root of the number of periods in a year. Please note that the number computed from annual data may differ materially from this estimate.

**Performance data shown represents past performance. Past performance is no guarantee of future results and current performance may be higher or lower than the performance shown. The investment return and principal value of an investment will fluctuate so that an investor's shares, when redeemed, may be worth more or less than their original cost. Average annual total returns include reinvestment of dividends and capital gains. To obtain Dimensional Fund performance data current to the most recent month-end access our website at [www.dimensionalfund.com](http://www.dimensionalfund.com).**

See Standardized Performance Data and Disclosures. Performance for periods greater than one year are annualized unless specified otherwise. Indices are not available for direct investment; therefore, their performance does not reflect the expenses associate with the management of an actual portfolio. Prior to listing date the following ETFs operated as mutual funds: DFUS, DFAC, DFAS, DFAT listing date 6/14/21; DFAX, DFIV listing date 9/13/21; and DFUV listing date 5/9/22. The NAVs of the predecessor mutual funds are used for both NAV and market price performance from inception to listing.

# Returns Chart

Calendar Year: 2001 - 2024



*Continued on next page*

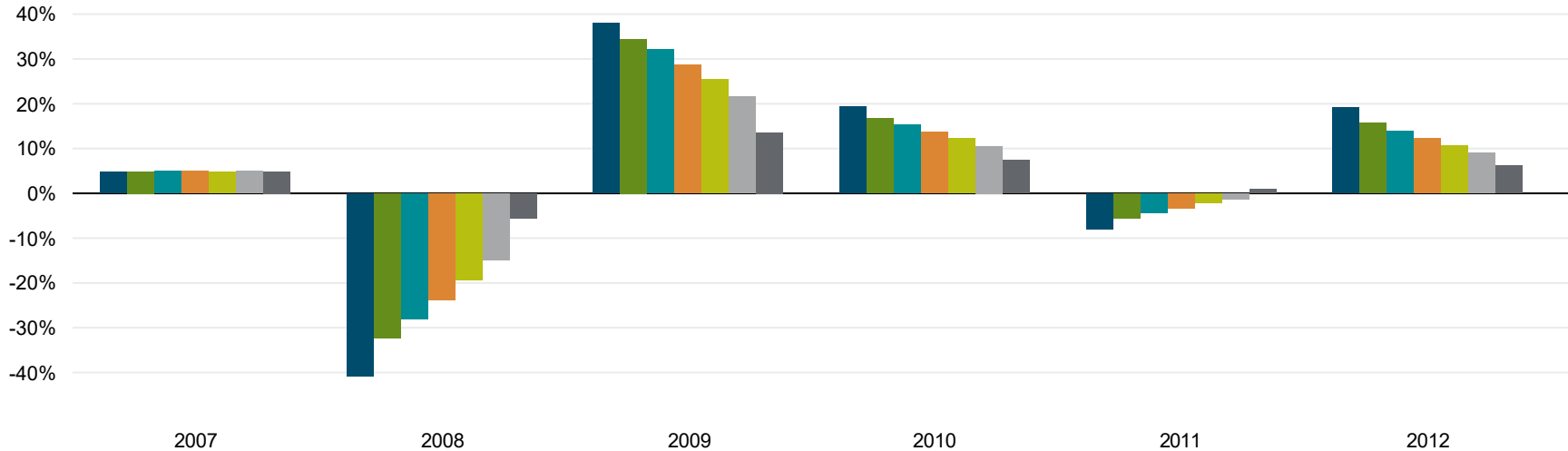
- SEVG - PIA Dimensions 100/0 Portfolio - R2
- SEVG - PIA Dimensions 70/30 Portfolio - R2
- SEVG - PIA Dimensions 50/50 Portfolio - R2
- SEVG - PIA Dimensions 20/80 Portfolio - R2
- SEVG - PIA Dimensions 80/20 Portfolio - R2
- SEVG - PIA Dimensions 60/40 Portfolio - R2
- SEVG - PIA Dimensions 40/60 Portfolio - R2

**Performance data shown represents past performance. Past performance is no guarantee of future results and current performance may be higher or lower than the performance shown. The investment return and principal value of an investment will fluctuate so that an investor's shares, when redeemed, may be worth more or less than their original cost. Average annual total returns include reinvestment of dividends and capital gains. To obtain Dimensional Fund performance data current to the most recent month-end access our website at [www.dimensionalfund.com](http://www.dimensionalfund.com).**

See Standardized Performance Data and Disclosures. Performance for periods greater than one year are annualized unless specified otherwise. Indices are not available for direct investment; therefore, their performance does not reflect the expenses associate with the management of an actual portfolio. Prior to listing date the following ETFs operated as mutual funds: DFUS, DFAC, DFAS, DFAT listing date 6/14/21; DFAX, DFIV listing date 9/13/21; and DFUV listing date 5/9/22. The NAVs of the predecessor mutual funds are used for both NAV and market price performance from inception to listing.

# Returns Chart

Calendar Year: 2001 - 2024



Continued on next page

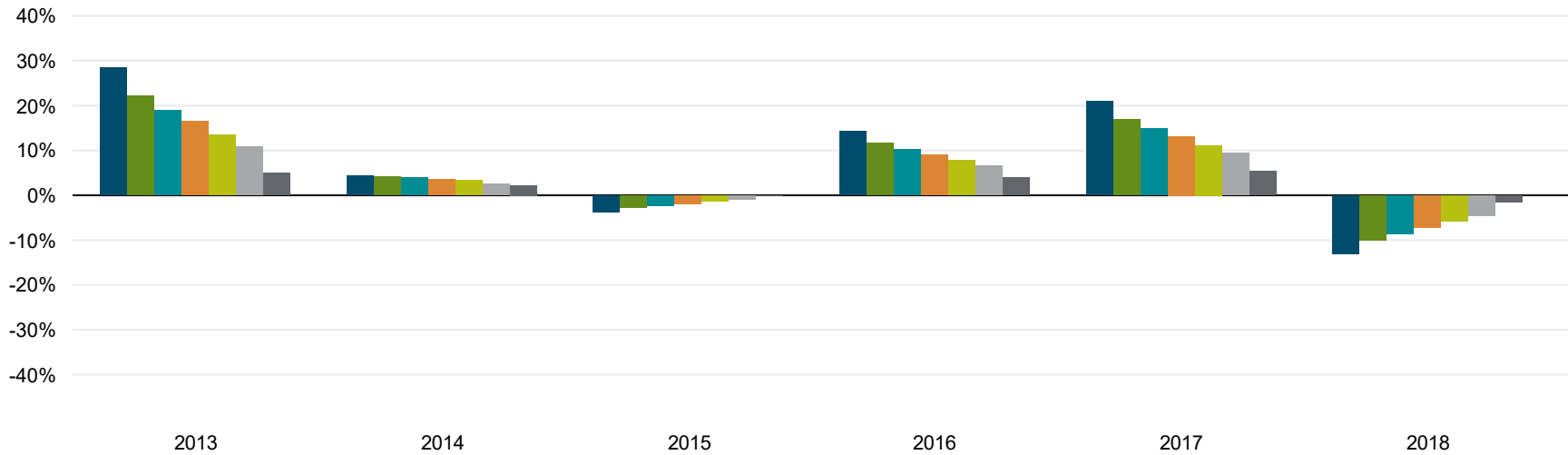
- SEVG - PIA Dimensions 100/0 Portfolio - R2
- SEVG - PIA Dimensions 70/30 Portfolio - R2
- SEVG - PIA Dimensions 50/50 Portfolio - R2
- SEVG - PIA Dimensions 20/80 Portfolio - R2
- SEVG - PIA Dimensions 80/20 Portfolio - R2
- SEVG - PIA Dimensions 60/40 Portfolio - R2
- SEVG - PIA Dimensions 40/60 Portfolio - R2

**Performance data shown represents past performance. Past performance is no guarantee of future results and current performance may be higher or lower than the performance shown. The investment return and principal value of an investment will fluctuate so that an investor's shares, when redeemed, may be worth more or less than their original cost. Average annual total returns include reinvestment of dividends and capital gains. To obtain Dimensional Fund performance data current to the most recent month-end access our website at [www.dimensionalfund.com](http://www.dimensionalfund.com).**

See Standardized Performance Data and Disclosures. Performance for periods greater than one year are annualized unless specified otherwise. Indices are not available for direct investment; therefore, their performance does not reflect the expenses associate with the management of an actual portfolio. Prior to listing date the following ETFs operated as mutual funds: DFUS, DFAC, DFAS, DFAT listing date 6/14/21; DFAX, DFIV listing date 9/13/21; and DFUV listing date 5/9/22. The NAVs of the predecessor mutual funds are used for both NAV and market price performance from inception to listing.

# Returns Chart

Calendar Year: 2001 - 2024



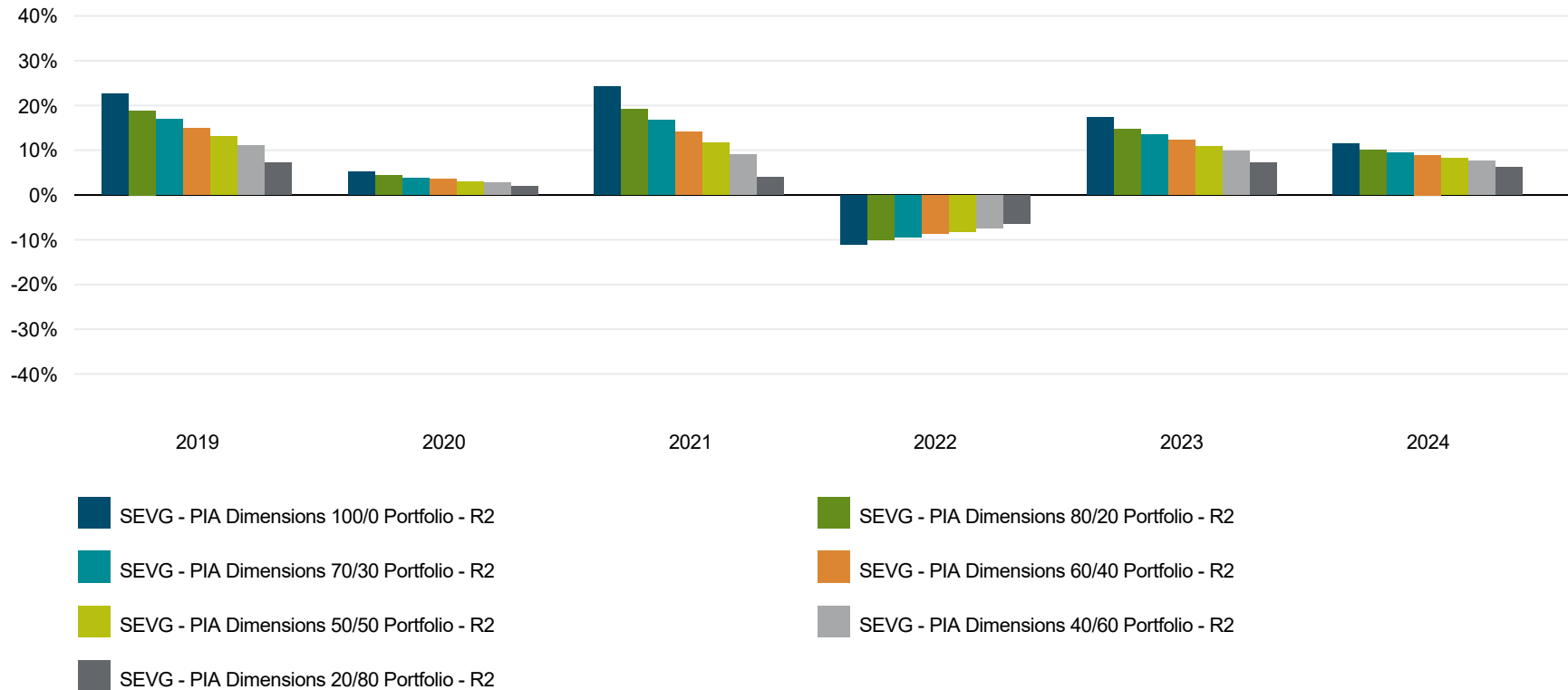
*Continued on next page*

- SEVG - PIA Dimensions 100/0 Portfolio - R2
- SEVG - PIA Dimensions 70/30 Portfolio - R2
- SEVG - PIA Dimensions 50/50 Portfolio - R2
- SEVG - PIA Dimensions 20/80 Portfolio - R2
- SEVG - PIA Dimensions 80/20 Portfolio - R2
- SEVG - PIA Dimensions 60/40 Portfolio - R2
- SEVG - PIA Dimensions 40/60 Portfolio - R2

**Performance data shown represents past performance. Past performance is no guarantee of future results and current performance may be higher or lower than the performance shown. The investment return and principal value of an investment will fluctuate so that an investor's shares, when redeemed, may be worth more or less than their original cost. Average annual total returns include reinvestment of dividends and capital gains. To obtain Dimensional Fund performance data current to the most recent month-end access our website at [www.dimensionalfund.com](http://www.dimensionalfund.com).**  
 See Standardized Performance Data and Disclosures. Performance for periods greater than one year are annualized unless specified otherwise. Indices are not available for direct investment; therefore, their performance does not reflect the expenses associate with the management of an actual portfolio. Prior to listing date the following ETFs operated as mutual funds: DFUS, DFAC, DFAS, DFAT listing date 6/14/21; DFAX, DFIV listing date 9/13/21; and DFUV listing date 5/9/22. The NAVs of the predecessor mutual funds are used for both NAV and market price performance from inception to listing.

# Returns Chart

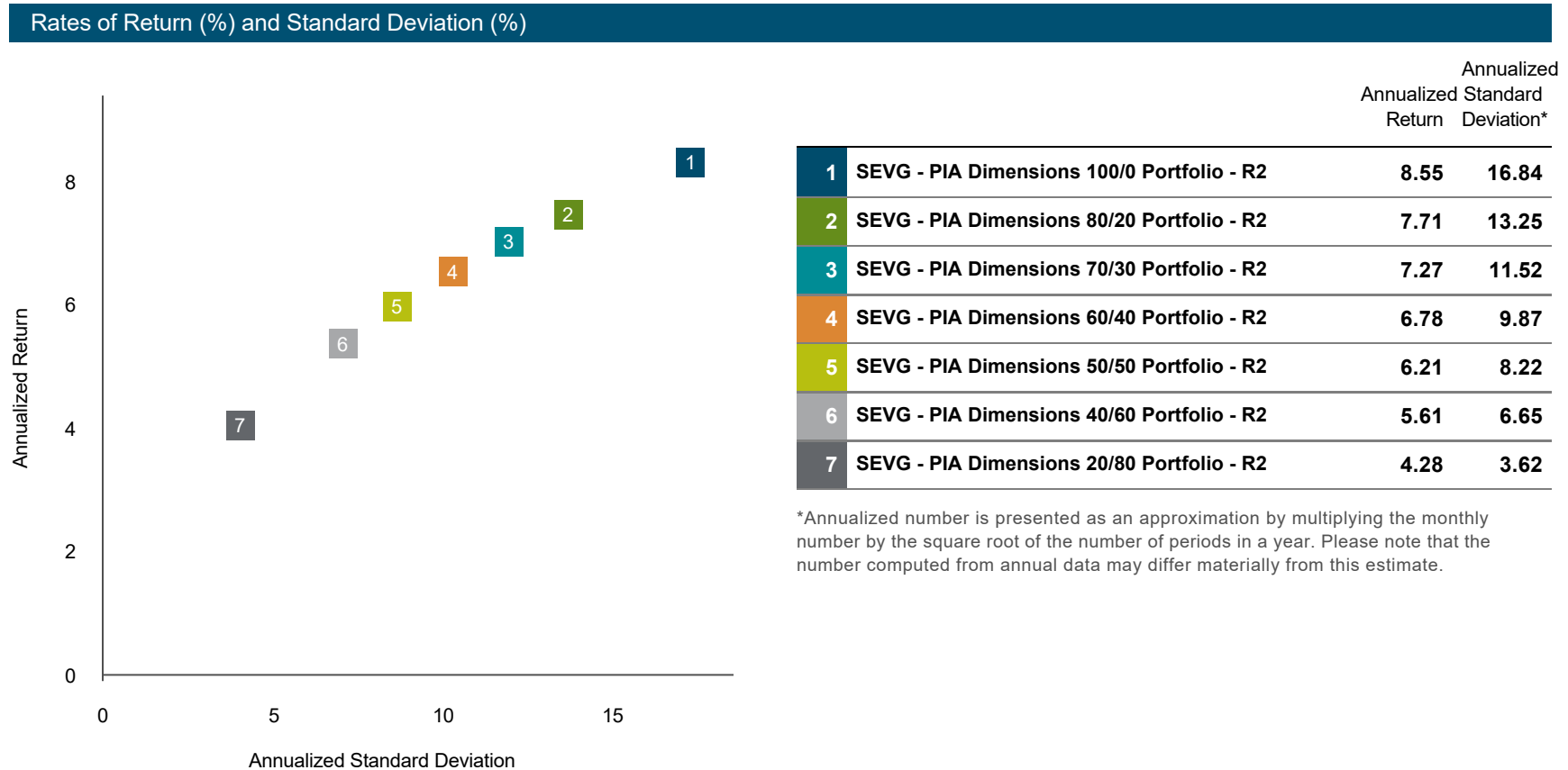
Calendar Year: 2001 - 2024



**Performance data shown represents past performance. Past performance is no guarantee of future results and current performance may be higher or lower than the performance shown. The investment return and principal value of an investment will fluctuate so that an investor's shares, when redeemed, may be worth more or less than their original cost. Average annual total returns include reinvestment of dividends and capital gains. To obtain Dimensional Fund performance data current to the most recent month-end access our website at [www.dimensionalfund.com](http://www.dimensionalfund.com). See Standardized Performance Data and Disclosures. Performance for periods greater than one year are annualized unless specified otherwise. Indices are not available for direct investment; therefore, their performance does not reflect the expenses associate with the management of an actual portfolio. Prior to listing date the following ETFs operated as mutual funds: DFUS, DFAC, DFAS, DFAT listing date 6/14/21; DFAX, DFIV listing date 9/13/21; and DFUV listing date 5/9/22. The NAVs of the predecessor mutual funds are used for both NAV and market price performance from inception to listing.**

# Return-Standard Deviation Chart

Monthly: 3/1/2000 - 6/30/2025



Performance data shown represents past performance. Past performance is no guarantee of future results and current performance may be higher or lower than the performance shown. The investment return and principal value of an investment will fluctuate so that an investor's shares, when redeemed, may be worth more or less than their original cost. Average annual total returns include reinvestment of dividends and capital gains. To obtain Dimensional Fund performance data current to the most recent month-end access our website at [www.dimensionalfund.com](http://www.dimensionalfund.com). See Standardized Performance Data and Disclosures. Performance for periods greater than one year are annualized unless specified otherwise. Indices are not available for direct investment; therefore, their performance does not reflect the expenses associate with the management of an actual portfolio. Prior to listing date the following ETFs operated as mutual funds: DFUS, DFAC, DFAS, DFAT listing date 6/14/21; DFAX, DFIV listing date 9/13/21; and DFUV listing date 5/9/22. The NAVs of the predecessor mutual funds are used for both NAV and market price performance from inception to listing.

# Data Source

Monthly: 3/1/2000 - 6/30/2025

## Sources and Descriptions of Data

Series Name	Date Range	Description
SEVG - PIA Dimensions 100/0 Portfolio - R2	3/2000 - 6/2025	SEVG - PIA Dimensions 100/0 Portfolio - R2 From 3/2000 To 6/2025

Constructed under USD

Period 1:

From 3/2000 (Earliest) To 3/2007

Rebalance: Per 12 Months

- DFA Emerging Markets Value Portfolio Class I 5.00%
- DFA International Value Portfolio Class I 10.0%
- DFA US Large Cap Value Portfolio Class I 19.00%
- DFA Emerging Markets Small Cap Portfolio Class I 5.00%
- DFA Real Estate Securities Portfolio Class I 5.00%
- DFA Large Cap International Portfolio Class I 10.0%
- DFA International Small Cap Value Portfolio Class I 8.00%
- DFA US Large Company Portfolio 18.00%
- DFA US Small Cap Portfolio Class I 10.0%
- DFA US Targeted Value Portfolio Class I 10.0%

**Performance data shown represents past performance. Past performance is no guarantee of future results and current performance may be higher or lower than the performance shown. The investment return and principal value of an investment will fluctuate so that an investor's shares, when redeemed, may be worth more or less than their original cost. Average annual total returns include reinvestment of dividends and capital gains. To obtain Dimensional Fund performance data current to the most recent month-end access our website at [www.dimensionalfund.com](http://www.dimensionalfund.com).**

See Standardized Performance Data and Disclosures. Performance for periods greater than one year are annualized unless specified otherwise. Indices are not available for direct investment; therefore, their performance does not reflect the expenses associate with the management of an actual portfolio. Prior to listing date the following ETFs operated as mutual funds: DFUS, DFAC, DFAS, DFAT listing date 6/14/21; DFAX, DFIV listing date 9/13/21; and DFUV listing date 5/9/22. The NAVs of the predecessor mutual funds are used for both NAV and market price performance from inception to listing.

# Data Source

Monthly: 3/1/2000 - 6/30/2025

## Sources and Descriptions of Data

Series Name	Date Range	Description
SEVG - PIA Dimensions 100/0 Portfolio - R2 (continued)	3/2000 - 6/2025	*Period adjustment: Adjustments: Basis Points: -5.0, Quarterly Period 2: From 4/2007 To 3/2009 Rebalance: Per 12 Months DFA International Value Portfolio Class I 10.0% DFA US Large Cap Value Portfolio Class I 19.00% DFA Real Estate Securities Portfolio Class I 3.00% DFA Large Cap International Portfolio Class I 10.0% DFA International Small Cap Value Portfolio Class I 8.00% DFA US Large Company Portfolio 18.00% DFA US Small Cap Portfolio Class I 10.0% DFA US Targeted Value Portfolio Class I 10.0%

**Performance data shown represents past performance. Past performance is no guarantee of future results and current performance may be higher or lower than the performance shown. The investment return and principal value of an investment will fluctuate so that an investor's shares, when redeemed, may be worth more or less than their original cost. Average annual total returns include reinvestment of dividends and capital gains. To obtain Dimensional Fund performance data current to the most recent month-end access our website at [www.dimensionalfund.com](http://www.dimensionalfund.com).**  
 See Standardized Performance Data and Disclosures. Performance for periods greater than one year are annualized unless specified otherwise. Indices are not available for direct investment; therefore, their performance does not reflect the expenses associate with the management of an actual portfolio. Prior to listing date the following ETFs operated as mutual funds: DFUS, DFAC, DFAS, DFAT listing date 6/14/21; DFAX, DFIV listing date 9/13/21; and DFUV listing date 5/9/22. The NAVs of the predecessor mutual funds are used for both NAV and market price performance from inception to listing.

# Data Source

Monthly: 3/1/2000 - 6/30/2025

## Sources and Descriptions of Data

Series Name	Date Range	Description
SEVG - PIA Dimensions 100/0 Portfolio - R2 (continued)	3/2000 - 6/2025	DFA Emerging Markets Core Equity 2 Portfolio Class I 10.0% DFA International Real Estate Securities Portfolio Class I 2.00% *Period adjustment: Adjustments: Basis Points: -5.0, Quarterly Period 3: From 4/2009 To 12/2015 Rebalance: Per 12 Months DFA International Value Portfolio Class I 17.00% DFA US Large Cap Value Portfolio Class I 19.00% DFA Real Estate Securities Portfolio Class I 3.00% DFA International Small Cap Value Portfolio Class I 10.0% DFA US Large Company Portfolio 19.00% DFA US Small Cap Portfolio Class I 9.00%

**Performance data shown represents past performance. Past performance is no guarantee of future results and current performance may be higher or lower than the performance shown. The investment return and principal value of an investment will fluctuate so that an investor's shares, when redeemed, may be worth more or less than their original cost. Average annual total returns include reinvestment of dividends and capital gains. To obtain Dimensional Fund performance data current to the most recent month-end access our website at [www.dimensionalfund.com](http://www.dimensionalfund.com).**  
 See Standardized Performance Data and Disclosures. Performance for periods greater than one year are annualized unless specified otherwise. Indices are not available for direct investment; therefore, their performance does not reflect the expenses associate with the management of an actual portfolio. Prior to listing date the following ETFs operated as mutual funds: DFUS, DFAC, DFAS, DFAT listing date 6/14/21; DFAX, DFIV listing date 9/13/21; and DFUV listing date 5/9/22. The NAVs of the predecessor mutual funds are used for both NAV and market price performance from inception to listing.

# Data Source

Monthly: 3/1/2000 - 6/30/2025

## Sources and Descriptions of Data

Series Name	Date Range	Description
SEVG - PIA Dimensions 100/0 Portfolio - R2 (continued)	3/2000 - 6/2025	DFA US Targeted Value Portfolio Class I 10.0% DFA Emerging Markets Core Equity 2 Portfolio Class I 10.0% DFA International Real Estate Securities Portfolio Class I 3.00% *Period adjustment: Adjustments: Basis Points: -5.0, Quarterly Period 4: From 1/2016 To 6/2025 (Latest) Rebalance: Per 12 Months DFA International Value Portfolio Class I 17.00% DFA US Large Cap Value Portfolio Class I 19.00% DFA Real Estate Securities Portfolio Class I 3.00% DFA International Small Cap Value Portfolio Class I 10.0% DFA US Small Cap Portfolio Class I 9.00%

**Performance data shown represents past performance. Past performance is no guarantee of future results and current performance may be higher or lower than the performance shown. The investment return and principal value of an investment will fluctuate so that an investor's shares, when redeemed, may be worth more or less than their original cost. Average annual total returns include reinvestment of dividends and capital gains. To obtain Dimensional Fund performance data current to the most recent month-end access our website at [www.dimensionalfund.com](http://www.dimensionalfund.com).**  
 See Standardized Performance Data and Disclosures. Performance for periods greater than one year are annualized unless specified otherwise. Indices are not available for direct investment; therefore, their performance does not reflect the expenses associate with the management of an actual portfolio. Prior to listing date the following ETFs operated as mutual funds: DFUS, DFAC, DFAS, DFAT listing date 6/14/21; DFAX, DFIV listing date 9/13/21; and DFUV listing date 5/9/22. The NAVs of the predecessor mutual funds are used for both NAV and market price performance from inception to listing.

# Data Source

Monthly: 3/1/2000 - 6/30/2025

## Sources and Descriptions of Data

Series Name	Date Range	Description
SEVG - PIA Dimensions 100/0 Portfolio - R2 (continued)	3/2000 - 6/2025	DFA US Targeted Value Portfolio Class I 10.0% DFA Emerging Markets Core Equity 2 Portfolio Class I 10.0% DFA International Real Estate Securities Portfolio Class I 3.00% Vanguard 500 Index Admiral 19.00% *Period adjustment: Adjustments: Basis Points: -5.0, Quarterly
SEVG - PIA Dimensions 20/80 Portfolio - R2	3/2000 - 6/2025	SEVG - PIA Dimensions 20/80 Portfolio - R2 From 3/2000 To 6/2025 Constructed under USD Period 1: From 3/2000 (Earliest) To 3/2007 Rebalance: Per 12 Months DFA Emerging Markets Value Portfolio Class I 1.00%

**Performance data shown represents past performance. Past performance is no guarantee of future results and current performance may be higher or lower than the performance shown. The investment return and principal value of an investment will fluctuate so that an investor's shares, when redeemed, may be worth more or less than their original cost. Average annual total returns include reinvestment of dividends and capital gains. To obtain Dimensional Fund performance data current to the most recent month-end access our website at [www.dimensionalfund.com](http://www.dimensionalfund.com).**  
 See Standardized Performance Data and Disclosures. Performance for periods greater than one year are annualized unless specified otherwise. Indices are not available for direct investment; therefore, their performance does not reflect the expenses associate with the management of an actual portfolio. Prior to listing date the following ETFs operated as mutual funds: DFUS, DFAC, DFAS, DFAT listing date 6/14/21; DFAX, DFIV listing date 9/13/21; and DFUV listing date 5/9/22. The NAVs of the predecessor mutual funds are used for both NAV and market price performance from inception to listing.

# Data Source

Monthly: 3/1/2000 - 6/30/2025

## Sources and Descriptions of Data

Series Name	Date Range	Description
SEVG - PIA Dimensions 20/80 Portfolio - R2 (continued)	3/2000 - 6/2025	DFA One-Year Fixed Income Portfolio Class I 20.0% DFA International Value Portfolio Class I 2.00% DFA US Large Cap Value Portfolio Class I 4.00% DFA Emerging Markets Small Cap Portfolio Class I 1.00% DFA Real Estate Securities Portfolio Class I 1.00% DFA Large Cap International Portfolio Class I 1.00% DFA Five-Year Global Fixed Income Portfolio Class I 60.0% DFA International Small Cap Value Portfolio Class I 2.00% DFA US Large Company Portfolio 4.00% DFA US Small Cap Portfolio Class I 2.00% DFA US Targeted Value Portfolio Class I 2.00% *Period adjustment: Adjustments: Basis Points: -5.0, Quarterly

**Performance data shown represents past performance. Past performance is no guarantee of future results and current performance may be higher or lower than the performance shown. The investment return and principal value of an investment will fluctuate so that an investor's shares, when redeemed, may be worth more or less than their original cost. Average annual total returns include reinvestment of dividends and capital gains. To obtain Dimensional Fund performance data current to the most recent month-end access our website at [www.dimensionalfund.com](http://www.dimensionalfund.com).**  
 See Standardized Performance Data and Disclosures. Performance for periods greater than one year are annualized unless specified otherwise. Indices are not available for direct investment; therefore, their performance does not reflect the expenses associate with the management of an actual portfolio. Prior to listing date the following ETFs operated as mutual funds: DFUS, DFAC, DFAS, DFAT listing date 6/14/21; DFAX, DFIV listing date 9/13/21; and DFUV listing date 5/9/22. The NAVs of the predecessor mutual funds are used for both NAV and market price performance from inception to listing.

# Data Source

Monthly: 3/1/2000 - 6/30/2025

## Sources and Descriptions of Data

Series Name	Date Range	Description
SEVG - PIA Dimensions 20/80 Portfolio - R2 (continued)	3/2000 - 6/2025	Period 2: From 4/2007 To 3/2009 Rebalance: Per 12 Months DFA One-Year Fixed Income Portfolio Class I 20.0% DFA International Value Portfolio Class I 2.00% DFA US Large Cap Value Portfolio Class I 4.00% DFA Real Estate Securities Portfolio Class I 1.00% DFA Large Cap International Portfolio Class I 1.00% DFA Five-Year Global Fixed Income Portfolio Class I 60.0% DFA International Small Cap Value Portfolio Class I 2.00% DFA US Large Company Portfolio 4.00% DFA US Small Cap Portfolio Class I 2.00% DFA US Targeted Value Portfolio Class I 2.00% DFA Emerging Markets Core Equity 2 Portfolio Class I 2.00% *Period adjustment:

**Performance data shown represents past performance. Past performance is no guarantee of future results and current performance may be higher or lower than the performance shown. The investment return and principal value of an investment will fluctuate so that an investor's shares, when redeemed, may be worth more or less than their original cost. Average annual total returns include reinvestment of dividends and capital gains. To obtain Dimensional Fund performance data current to the most recent month-end access our website at [www.dimensionalfund.com](http://www.dimensionalfund.com).**

See Standardized Performance Data and Disclosures. Performance for periods greater than one year are annualized unless specified otherwise. Indices are not available for direct investment; therefore, their performance does not reflect the expenses associate with the management of an actual portfolio. Prior to listing date the following ETFs operated as mutual funds: DFUS, DFAC, DFAS, DFAT listing date 6/14/21; DFAX, DFIV listing date 9/13/21; and DFUV listing date 5/9/22. The NAVs of the predecessor mutual funds are used for both NAV and market price performance from inception to listing.

# Data Source

Monthly: 3/1/2000 - 6/30/2025

## Sources and Descriptions of Data

Series Name	Date Range	Description
SEVG - PIA Dimensions 20/80 Portfolio - R2 (continued)	3/2000 - 6/2025	Adjustments: Basis Points: -5.0, Quarterly Period 3: From 4/2009 To 12/2015 Rebalance: Per 12 Months DFA One-Year Fixed Income Portfolio Class I 20.0% DFA International Value Portfolio Class I 4.00% DFA US Large Cap Value Portfolio Class I 3.00% DFA Real Estate Securities Portfolio Class I 1.00% DFA Five-Year Global Fixed Income Portfolio Class I 40.0% DFA International Small Cap Value Portfolio Class I 2.00% DFA US Large Company Portfolio 3.00% DFA US Small Cap Portfolio Class I 2.00% DFA US Targeted Value Portfolio Class I 2.00%

**Performance data shown represents past performance. Past performance is no guarantee of future results and current performance may be higher or lower than the performance shown. The investment return and principal value of an investment will fluctuate so that an investor's shares, when redeemed, may be worth more or less than their original cost. Average annual total returns include reinvestment of dividends and capital gains. To obtain Dimensional Fund performance data current to the most recent month-end access our website at [www.dimensionalfund.com](http://www.dimensionalfund.com).**

See Standardized Performance Data and Disclosures. Performance for periods greater than one year are annualized unless specified otherwise. Indices are not available for direct investment; therefore, their performance does not reflect the expenses associate with the management of an actual portfolio. Prior to listing date the following ETFs operated as mutual funds: DFUS, DFAC, DFAS, DFAT listing date 6/14/21; DFAX, DFIV listing date 9/13/21; and DFUV listing date 5/9/22. The NAVs of the predecessor mutual funds are used for both NAV and market price performance from inception to listing.

# Data Source

Monthly: 3/1/2000 - 6/30/2025

## Sources and Descriptions of Data

Series Name	Date Range	Description
SEVG - PIA Dimensions 20/80 Portfolio - R2 (continued)	3/2000 - 6/2025	DFA Emerging Markets Core Equity 2 Portfolio Class I 2.00% DFA Short Term Extended Quality Portfolio 20.0% DFA International Real Estate Securities Portfolio Class I 1.00% *Period adjustment: Adjustments: Basis Points: -5.0, Quarterly Period 4: From 1/2016 To 6/2025 (Latest) Rebalance: Per 12 Months DFA One-Year Fixed Income Portfolio Class I 20.0% DFA International Value Portfolio Class I 4.00% DFA US Large Cap Value Portfolio Class I 3.00% DFA Real Estate Securities Portfolio Class I 1.00% DFA Five-Year Global Fixed Income Portfolio Class I 40.0%

**Performance data shown represents past performance. Past performance is no guarantee of future results and current performance may be higher or lower than the performance shown. The investment return and principal value of an investment will fluctuate so that an investor's shares, when redeemed, may be worth more or less than their original cost. Average annual total returns include reinvestment of dividends and capital gains. To obtain Dimensional Fund performance data current to the most recent month-end access our website at [www.dimensionalfund.com](http://www.dimensionalfund.com).**  
 See Standardized Performance Data and Disclosures. Performance for periods greater than one year are annualized unless specified otherwise. Indices are not available for direct investment; therefore, their performance does not reflect the expenses associate with the management of an actual portfolio. Prior to listing date the following ETFs operated as mutual funds: DFUS, DFAC, DFAS, DFAT listing date 6/14/21; DFAX, DFIV listing date 9/13/21; and DFUV listing date 5/9/22. The NAVs of the predecessor mutual funds are used for both NAV and market price performance from inception to listing.

# Data Source

Monthly: 3/1/2000 - 6/30/2025

## Sources and Descriptions of Data

Series Name	Date Range	Description
SEVG - PIA Dimensions 20/80 Portfolio - R2 (continued)	3/2000 - 6/2025	DFA International Small Cap Value Portfolio Class I 2.00% DFA US Small Cap Portfolio Class I 2.00% DFA US Targeted Value Portfolio Class I 2.00% DFA Emerging Markets Core Equity 2 Portfolio Class I 2.00% DFA Short Term Extended Quality Portfolio 20.0% DFA International Real Estate Securities Portfolio Class I 1.00% Vanguard 500 Index Admiral 3.00% *Period adjustment: Adjustments: Basis Points: -5.0, Quarterly
SEVG - PIA Dimensions 40/60 Portfolio - R2	3/2000 - 6/2025	SEVG - PIA Dimensions 40/60 Portfolio - R2 From 3/2000 To 6/2025

Constructed under USD

Period 1:

**Performance data shown represents past performance. Past performance is no guarantee of future results and current performance may be higher or lower than the performance shown. The investment return and principal value of an investment will fluctuate so that an investor's shares, when redeemed, may be worth more or less than their original cost. Average annual total returns include reinvestment of dividends and capital gains. To obtain Dimensional Fund performance data current to the most recent month-end access our website at [www.dimensionalfund.com](http://www.dimensionalfund.com).**  
 See Standardized Performance Data and Disclosures. Performance for periods greater than one year are annualized unless specified otherwise. Indices are not available for direct investment; therefore, their performance does not reflect the expenses associate with the management of an actual portfolio. Prior to listing date the following ETFs operated as mutual funds: DFUS, DFAC, DFAS, DFAT listing date 6/14/21; DFAX, DFIV listing date 9/13/21; and DFUV listing date 5/9/22. The NAVs of the predecessor mutual funds are used for both NAV and market price performance from inception to listing.

# Data Source

Monthly: 3/1/2000 - 6/30/2025

## Sources and Descriptions of Data

Series Name	Date Range	Description
SEVG - PIA Dimensions 40/60 Portfolio - R2 (continued)	3/2000 - 6/2025	<p>From 3/2000 (Earliest) To 3/2007</p> <p>Rebalance: Per 12 Months</p> <p>DFA Emerging Markets Value Portfolio Class I 2.00%</p> <p>DFA One-Year Fixed Income Portfolio Class I 15.00%</p> <p>DFA International Value Portfolio Class I 4.00%</p> <p>DFA US Large Cap Value Portfolio Class I 8.00%</p> <p>DFA Emerging Markets Small Cap Portfolio Class I 2.00%</p> <p>DFA Real Estate Securities Portfolio Class I 2.00%</p> <p>DFA Large Cap International Portfolio Class I 3.00%</p> <p>DFA Five-Year Global Fixed Income Portfolio Class I 45.00%</p> <p>DFA International Small Cap Value Portfolio Class I 3.00%</p> <p>DFA US Large Company Portfolio 8.00%</p> <p>DFA US Small Cap Portfolio Class I 4.00%</p>

**Performance data shown represents past performance. Past performance is no guarantee of future results and current performance may be higher or lower than the performance shown. The investment return and principal value of an investment will fluctuate so that an investor's shares, when redeemed, may be worth more or less than their original cost. Average annual total returns include reinvestment of dividends and capital gains. To obtain Dimensional Fund performance data current to the most recent month-end access our website at [www.dimensionalfund.com](http://www.dimensionalfund.com).**

See Standardized Performance Data and Disclosures. Performance for periods greater than one year are annualized unless specified otherwise. Indices are not available for direct investment; therefore, their performance does not reflect the expenses associate with the management of an actual portfolio. Prior to listing date the following ETFs operated as mutual funds: DFUS, DFAC, DFAS, DFAT listing date 6/14/21; DFAX, DFIV listing date 9/13/21; and DFUV listing date 5/9/22. The NAVs of the predecessor mutual funds are used for both NAV and market price performance from inception to listing.

# Data Source

Monthly: 3/1/2000 - 6/30/2025

## Sources and Descriptions of Data

Series Name	Date Range	Description
SEVG - PIA Dimensions 40/60 Portfolio - R2 (continued)	3/2000 - 6/2025	DFA US Targeted Value Portfolio Class I 4.00% *Period adjustment: Adjustments: Basis Points: -5.0, Quarterly Period 2: From 4/2007 To 3/2009 Rebalance: Per 12 Months DFA One-Year Fixed Income Portfolio Class I 15.00% DFA International Value Portfolio Class I 4.00% DFA US Large Cap Value Portfolio Class I 8.00% DFA Real Estate Securities Portfolio Class I 1.00% DFA Large Cap International Portfolio Class I 3.00% DFA Five-Year Global Fixed Income Portfolio Class I 45.00% DFA International Small Cap Value Portfolio Class I 3.00%

**Performance data shown represents past performance. Past performance is no guarantee of future results and current performance may be higher or lower than the performance shown. The investment return and principal value of an investment will fluctuate so that an investor's shares, when redeemed, may be worth more or less than their original cost. Average annual total returns include reinvestment of dividends and capital gains. To obtain Dimensional Fund performance data current to the most recent month-end access our website at [www.dimensionalfund.com](http://www.dimensionalfund.com).**

See Standardized Performance Data and Disclosures. Performance for periods greater than one year are annualized unless specified otherwise. Indices are not available for direct investment; therefore, their performance does not reflect the expenses associate with the management of an actual portfolio. Prior to listing date the following ETFs operated as mutual funds: DFUS, DFAC, DFAS, DFAT listing date 6/14/21; DFAX, DFIV listing date 9/13/21; and DFUV listing date 5/9/22. The NAVs of the predecessor mutual funds are used for both NAV and market price performance from inception to listing.

# Data Source

Monthly: 3/1/2000 - 6/30/2025

## Sources and Descriptions of Data

Series Name	Date Range	Description
SEVG - PIA Dimensions 40/60 Portfolio - R2 (continued)	3/2000 - 6/2025	DFA US Large Company Portfolio 8.00%
		DFA US Small Cap Portfolio Class I 4.00%
		DFA US Targeted Value Portfolio Class I 4.00%
		DFA Emerging Markets Core Equity 2 Portfolio Class I 4.00%
		DFA International Real Estate Securities Portfolio Class I 1.00%
		*Period adjustment:
		Adjustments:
		Basis Points: -5.0, Quarterly
		Period 3:
		From 4/2009 To 12/2015
		Rebalance: Per 12 Months
		DFA One-Year Fixed Income Portfolio Class I 15.00%
		DFA International Value Portfolio Class I 8.00%
		DFA US Large Cap Value Portfolio Class I 7.00%

**Performance data shown represents past performance. Past performance is no guarantee of future results and current performance may be higher or lower than the performance shown. The investment return and principal value of an investment will fluctuate so that an investor's shares, when redeemed, may be worth more or less than their original cost. Average annual total returns include reinvestment of dividends and capital gains. To obtain Dimensional Fund performance data current to the most recent month-end access our website at [www.dimensionalfund.com](http://www.dimensionalfund.com).**

See Standardized Performance Data and Disclosures. Performance for periods greater than one year are annualized unless specified otherwise. Indices are not available for direct investment; therefore, their performance does not reflect the expenses associate with the management of an actual portfolio. Prior to listing date the following ETFs operated as mutual funds: DFUS, DFAC, DFAS, DFAT listing date 6/14/21; DFAX, DFIV listing date 9/13/21; and DFUV listing date 5/9/22. The NAVs of the predecessor mutual funds are used for both NAV and market price performance from inception to listing.

# Data Source

Monthly: 3/1/2000 - 6/30/2025

## Sources and Descriptions of Data

Series Name	Date Range	Description
SEVG - PIA Dimensions 40/60 Portfolio - R2 (continued)	3/2000 - 6/2025	DFA Real Estate Securities Portfolio Class I 1.00% DFA Five-Year Global Fixed Income Portfolio Class I 30.0% DFA International Small Cap Value Portfolio Class I 4.00% DFA US Large Company Portfolio 7.00% DFA US Small Cap Portfolio Class I 4.00% DFA US Targeted Value Portfolio Class I 4.00% DFA Emerging Markets Core Equity 2 Portfolio Class I 4.00% DFA International Real Estate Securities Portfolio Class I 1.00% DFA Short Term Extended Quality Portfolio 15.00%
		*Period adjustment:
		Adjustments:
		Basis Points: -5.0, Quarterly
		Period 4:
		From 1/2016 To 6/2025 (Latest)

**Performance data shown represents past performance. Past performance is no guarantee of future results and current performance may be higher or lower than the performance shown. The investment return and principal value of an investment will fluctuate so that an investor's shares, when redeemed, may be worth more or less than their original cost. Average annual total returns include reinvestment of dividends and capital gains. To obtain Dimensional Fund performance data current to the most recent month-end access our website at [www.dimensionalfund.com](http://www.dimensionalfund.com).**

See Standardized Performance Data and Disclosures. Performance for periods greater than one year are annualized unless specified otherwise. Indices are not available for direct investment; therefore, their performance does not reflect the expenses associate with the management of an actual portfolio. Prior to listing date the following ETFs operated as mutual funds: DFUS, DFAC, DFAS, DFAT listing date 6/14/21; DFAX, DFIV listing date 9/13/21; and DFUV listing date 5/9/22. The NAVs of the predecessor mutual funds are used for both NAV and market price performance from inception to listing.

# Data Source

Monthly: 3/1/2000 - 6/30/2025

## Sources and Descriptions of Data

Series Name	Date Range	Description
SEVG - PIA Dimensions 40/60 Portfolio - R2 (continued)	3/2000 - 6/2025	Rebalance: Per 12 Months DFA One-Year Fixed Income Portfolio Class I 15.00% DFA International Value Portfolio Class I 8.00% DFA US Large Cap Value Portfolio Class I 7.00% DFA Real Estate Securities Portfolio Class I 1.00% DFA Five-Year Global Fixed Income Portfolio Class I 30.0% DFA International Small Cap Value Portfolio Class I 4.00% DFA US Small Cap Portfolio Class I 4.00% DFA US Targeted Value Portfolio Class I 4.00% DFA Emerging Markets Core Equity 2 Portfolio Class I 4.00% DFA International Real Estate Securities Portfolio Class I 1.00% DFA Short Term Extended Quality Portfolio 15.00% Vanguard 500 Index Admiral 7.00%

**Performance data shown represents past performance. Past performance is no guarantee of future results and current performance may be higher or lower than the performance shown. The investment return and principal value of an investment will fluctuate so that an investor's shares, when redeemed, may be worth more or less than their original cost. Average annual total returns include reinvestment of dividends and capital gains. To obtain Dimensional Fund performance data current to the most recent month-end access our website at [www.dimensionalfund.com](http://www.dimensionalfund.com).**

See Standardized Performance Data and Disclosures. Performance for periods greater than one year are annualized unless specified otherwise. Indices are not available for direct investment; therefore, their performance does not reflect the expenses associate with the management of an actual portfolio. Prior to listing date the following ETFs operated as mutual funds: DFUS, DFAC, DFAS, DFAT listing date 6/14/21; DFAX, DFIV listing date 9/13/21; and DFUV listing date 5/9/22. The NAVs of the predecessor mutual funds are used for both NAV and market price performance from inception to listing.

# Data Source

Monthly: 3/1/2000 - 6/30/2025

## Sources and Descriptions of Data

Series Name	Date Range	Description
SEVG - PIA Dimensions 40/60 Portfolio - R2 (continued)	3/2000 - 6/2025	*Period adjustment: Adjustments: Basis Points: -5.0, Quarterly
SEVG - PIA Dimensions 50/50 Portfolio - R2	3/2000 - 6/2025	SEVG - PIA Dimensions 50/50 Portfolio - R2 From 3/2000 To 6/2025 Constructed under USD Period 1: From 3/2000 (Earliest) To 3/2007 Rebalance: Per 12 Months DFA Emerging Markets Value Portfolio Class I 2.500% DFA One-Year Fixed Income Portfolio Class I 12.500% DFA International Value Portfolio Class I 5.00% DFA US Large Cap Value Portfolio Class I 10.0% DFA Emerging Markets Small Cap Portfolio Class I 2.500%

**Performance data shown represents past performance. Past performance is no guarantee of future results and current performance may be higher or lower than the performance shown. The investment return and principal value of an investment will fluctuate so that an investor's shares, when redeemed, may be worth more or less than their original cost. Average annual total returns include reinvestment of dividends and capital gains. To obtain Dimensional Fund performance data current to the most recent month-end access our website at [www.dimensionalfund.com](http://www.dimensionalfund.com).**  
See Standardized Performance Data and Disclosures. Performance for periods greater than one year are annualized unless specified otherwise. Indices are not available for direct investment; therefore, their performance does not reflect the expenses associate with the management of an actual portfolio. Prior to listing date the following ETFs operated as mutual funds: DFUS, DFAC, DFAS, DFAT listing date 6/14/21; DFAX, DFIV listing date 9/13/21; and DFUV listing date 5/9/22. The NAVs of the predecessor mutual funds are used for both NAV and market price performance from inception to listing.

# Data Source

Monthly: 3/1/2000 - 6/30/2025

## Sources and Descriptions of Data

Series Name	Date Range	Description
SEVG - PIA Dimensions 50/50 Portfolio - R2 (continued)	3/2000 - 6/2025	DFA Real Estate Securities Portfolio Class I 2.500% DFA Large Cap International Portfolio Class I 4.00% DFA Five-Year Global Fixed Income Portfolio Class I 37.500% DFA International Small Cap Value Portfolio Class I 4.00% DFA US Large Company Portfolio 10.0% DFA US Small Cap Portfolio Class I 5.00% DFA US Targeted Value Portfolio Class I 4.500% *Period adjustment: Adjustments: Basis Points: -5.0, Quarterly Period 2: From 4/2007 To 3/2009 Rebalance: Per 12 Months DFA One-Year Fixed Income Portfolio Class I 12.500%

**Performance data shown represents past performance. Past performance is no guarantee of future results and current performance may be higher or lower than the performance shown. The investment return and principal value of an investment will fluctuate so that an investor's shares, when redeemed, may be worth more or less than their original cost. Average annual total returns include reinvestment of dividends and capital gains. To obtain Dimensional Fund performance data current to the most recent month-end access our website at [www.dimensionalfund.com](http://www.dimensionalfund.com).**

See Standardized Performance Data and Disclosures. Performance for periods greater than one year are annualized unless specified otherwise. Indices are not available for direct investment; therefore, their performance does not reflect the expenses associate with the management of an actual portfolio. Prior to listing date the following ETFs operated as mutual funds: DFUS, DFAC, DFAS, DFAT listing date 6/14/21; DFAX, DFIV listing date 9/13/21; and DFUV listing date 5/9/22. The NAVs of the predecessor mutual funds are used for both NAV and market price performance from inception to listing.

# Data Source

Monthly: 3/1/2000 - 6/30/2025

## Sources and Descriptions of Data

Series Name	Date Range	Description
SEVG - PIA Dimensions 50/50 Portfolio - R2 (continued)	3/2000 - 6/2025	DFA International Value Portfolio Class I 5.00% DFA US Large Cap Value Portfolio Class I 10.0% DFA Real Estate Securities Portfolio Class I 2.00% DFA Large Cap International Portfolio Class I 4.00% DFA Five-Year Global Fixed Income Portfolio Class I 37.500% DFA International Small Cap Value Portfolio Class I 4.00% DFA US Large Company Portfolio 10.0% DFA US Small Cap Portfolio Class I 5.00% DFA US Targeted Value Portfolio Class I 4.00% DFA Emerging Markets Core Equity 2 Portfolio Class I 5.00% DFA International Real Estate Securities Portfolio Class I 1.00% *Period adjustment: Adjustments: Basis Points: -5.0, Quarterly

**Performance data shown represents past performance. Past performance is no guarantee of future results and current performance may be higher or lower than the performance shown. The investment return and principal value of an investment will fluctuate so that an investor's shares, when redeemed, may be worth more or less than their original cost. Average annual total returns include reinvestment of dividends and capital gains. To obtain Dimensional Fund performance data current to the most recent month-end access our website at [www.dimensionalfund.com](http://www.dimensionalfund.com).**

See Standardized Performance Data and Disclosures. Performance for periods greater than one year are annualized unless specified otherwise. Indices are not available for direct investment; therefore, their performance does not reflect the expenses associate with the management of an actual portfolio. Prior to listing date the following ETFs operated as mutual funds: DFUS, DFAC, DFAS, DFAT listing date 6/14/21; DFAX, DFIV listing date 9/13/21; and DFUV listing date 5/9/22. The NAVs of the predecessor mutual funds are used for both NAV and market price performance from inception to listing.

# Data Source

Monthly: 3/1/2000 - 6/30/2025

## Sources and Descriptions of Data

Series Name	Date Range	Description
SEVG - PIA Dimensions 50/50 Portfolio - R2 (continued)	3/2000 - 6/2025	Period 3: From 4/2009 To 12/2015 Rebalance: Per 12 Months DFA One-Year Fixed Income Portfolio Class I 13.00% DFA International Value Portfolio Class I 8.00% DFA US Large Cap Value Portfolio Class I 10.0% DFA Real Estate Securities Portfolio Class I 2.00% DFA Five-Year Global Fixed Income Portfolio Class I 25.00% DFA International Small Cap Value Portfolio Class I 5.00% DFA US Large Company Portfolio 9.00% DFA US Small Cap Portfolio Class I 4.00% DFA US Targeted Value Portfolio Class I 5.00% DFA Emerging Markets Core Equity 2 Portfolio Class I 5.00% DFA International Real Estate Securities Portfolio Class I 2.00%

**Performance data shown represents past performance. Past performance is no guarantee of future results and current performance may be higher or lower than the performance shown. The investment return and principal value of an investment will fluctuate so that an investor's shares, when redeemed, may be worth more or less than their original cost. Average annual total returns include reinvestment of dividends and capital gains. To obtain Dimensional Fund performance data current to the most recent month-end access our website at [www.dimensionalfund.com](http://www.dimensionalfund.com).**  
 See Standardized Performance Data and Disclosures. Performance for periods greater than one year are annualized unless specified otherwise. Indices are not available for direct investment; therefore, their performance does not reflect the expenses associate with the management of an actual portfolio. Prior to listing date the following ETFs operated as mutual funds: DFUS, DFAC, DFAS, DFAT listing date 6/14/21; DFAX, DFIV listing date 9/13/21; and DFUV listing date 5/9/22. The NAVs of the predecessor mutual funds are used for both NAV and market price performance from inception to listing.

# Data Source

Monthly: 3/1/2000 - 6/30/2025

## Sources and Descriptions of Data

Series Name	Date Range	Description
SEVG - PIA Dimensions 50/50 Portfolio - R2 (continued)	3/2000 - 6/2025	DFA Short Term Extended Quality Portfolio 12.00% *Period adjustment: Adjustments: Basis Points: -5.0, Quarterly Period 4: From 1/2016 To 6/2025 (Latest) Rebalance: Per 12 Months DFA One-Year Fixed Income Portfolio Class I 13.00% DFA International Value Portfolio Class I 8.00% DFA US Large Cap Value Portfolio Class I 10.0% DFA Real Estate Securities Portfolio Class I 2.00% DFA Five-Year Global Fixed Income Portfolio Class I 25.00% DFA International Small Cap Value Portfolio Class I 5.00% DFA US Small Cap Portfolio Class I 4.00%

**Performance data shown represents past performance. Past performance is no guarantee of future results and current performance may be higher or lower than the performance shown. The investment return and principal value of an investment will fluctuate so that an investor's shares, when redeemed, may be worth more or less than their original cost. Average annual total returns include reinvestment of dividends and capital gains. To obtain Dimensional Fund performance data current to the most recent month-end access our website at [www.dimensionalfund.com](http://www.dimensionalfund.com).**

See Standardized Performance Data and Disclosures. Performance for periods greater than one year are annualized unless specified otherwise. Indices are not available for direct investment; therefore, their performance does not reflect the expenses associate with the management of an actual portfolio. Prior to listing date the following ETFs operated as mutual funds: DFUS, DFAC, DFAS, DFAT listing date 6/14/21; DFAX, DFIV listing date 9/13/21; and DFUV listing date 5/9/22. The NAVs of the predecessor mutual funds are used for both NAV and market price performance from inception to listing.

# Data Source

Monthly: 3/1/2000 - 6/30/2025

## Sources and Descriptions of Data

Series Name	Date Range	Description
SEVG - PIA Dimensions 50/50 Portfolio - R2 (continued)	3/2000 - 6/2025	DFA US Targeted Value Portfolio Class I 5.00% DFA Emerging Markets Core Equity 2 Portfolio Class I 5.00% DFA International Real Estate Securities Portfolio Class I 2.00% DFA Short Term Extended Quality Portfolio 12.00% Vanguard 500 Index Admiral 9.00% *Period adjustment: Adjustments: Basis Points: -5.0, Quarterly
SEVG - PIA Dimensions 60/40 Portfolio - R2	3/2000 - 6/2025	SEVG - PIA Dimensions 60/40 Portfolio - R2 From 3/2000 To 6/2025 Constructed under USD Period 1: From 3/2000 (Earliest) To 3/2007 Rebalance: Per 12 Months

**Performance data shown represents past performance. Past performance is no guarantee of future results and current performance may be higher or lower than the performance shown. The investment return and principal value of an investment will fluctuate so that an investor's shares, when redeemed, may be worth more or less than their original cost. Average annual total returns include reinvestment of dividends and capital gains. To obtain Dimensional Fund performance data current to the most recent month-end access our website at [www.dimensionalfund.com](http://www.dimensionalfund.com).**

See Standardized Performance Data and Disclosures. Performance for periods greater than one year are annualized unless specified otherwise. Indices are not available for direct investment; therefore, their performance does not reflect the expenses associate with the management of an actual portfolio. Prior to listing date the following ETFs operated as mutual funds: DFUS, DFAC, DFAS, DFAT listing date 6/14/21; DFAX, DFIV listing date 9/13/21; and DFUV listing date 5/9/22. The NAVs of the predecessor mutual funds are used for both NAV and market price performance from inception to listing.

# Data Source

Monthly: 3/1/2000 - 6/30/2025

## Sources and Descriptions of Data

Series Name	Date Range	Description
SEVG - PIA Dimensions 60/40 Portfolio - R2 (continued)	3/2000 - 6/2025	DFA Emerging Markets Value Portfolio Class I 3.00% DFA One-Year Fixed Income Portfolio Class I 10.0% DFA International Value Portfolio Class I 6.00% DFA US Large Cap Value Portfolio Class I 12.00% DFA Emerging Markets Small Cap Portfolio Class I 3.00% DFA Real Estate Securities Portfolio Class I 3.00% DFA Large Cap International Portfolio Class I 5.00% DFA Five-Year Global Fixed Income Portfolio Class I 30.0% DFA International Small Cap Value Portfolio Class I 5.00% DFA US Large Company Portfolio 12.00% DFA US Small Cap Portfolio Class I 6.00% DFA US Targeted Value Portfolio Class I 5.00%

\*Period adjustment:  
Adjustments:

**Performance data shown represents past performance. Past performance is no guarantee of future results and current performance may be higher or lower than the performance shown. The investment return and principal value of an investment will fluctuate so that an investor's shares, when redeemed, may be worth more or less than their original cost. Average annual total returns include reinvestment of dividends and capital gains. To obtain Dimensional Fund performance data current to the most recent month-end access our website at [www.dimensionalfund.com](http://www.dimensionalfund.com).**  
 See Standardized Performance Data and Disclosures. Performance for periods greater than one year are annualized unless specified otherwise. Indices are not available for direct investment; therefore, their performance does not reflect the expenses associate with the management of an actual portfolio. Prior to listing date the following ETFs operated as mutual funds: DFUS, DFAC, DFAS, DFAT listing date 6/14/21; DFAX, DFIV listing date 9/13/21; and DFUV listing date 5/9/22. The NAVs of the predecessor mutual funds are used for both NAV and market price performance from inception to listing.

# Data Source

Monthly: 3/1/2000 - 6/30/2025

## Sources and Descriptions of Data

Series Name	Date Range	Description
SEVG - PIA Dimensions 60/40 Portfolio - R2 (continued)	3/2000 - 6/2025	Basis Points: -5.0, Quarterly  Period 2: From 4/2007 To 3/2009 Rebalance: Per 12 Months DFA One-Year Fixed Income Portfolio Class I 10.0% DFA International Value Portfolio Class I 6.00% DFA US Large Cap Value Portfolio Class I 12.00% DFA Real Estate Securities Portfolio Class I 2.00% DFA Large Cap International Portfolio Class I 5.00% DFA Five-Year Global Fixed Income Portfolio Class I 30.0% DFA International Small Cap Value Portfolio Class I 5.00% DFA US Large Company Portfolio 12.00% DFA US Small Cap Portfolio Class I 6.00% DFA US Targeted Value Portfolio Class I 5.00%

**Performance data shown represents past performance. Past performance is no guarantee of future results and current performance may be higher or lower than the performance shown. The investment return and principal value of an investment will fluctuate so that an investor's shares, when redeemed, may be worth more or less than their original cost. Average annual total returns include reinvestment of dividends and capital gains. To obtain Dimensional Fund performance data current to the most recent month-end access our website at [www.dimensionalfund.com](http://www.dimensionalfund.com).**

See Standardized Performance Data and Disclosures. Performance for periods greater than one year are annualized unless specified otherwise. Indices are not available for direct investment; therefore, their performance does not reflect the expenses associate with the management of an actual portfolio. Prior to listing date the following ETFs operated as mutual funds: DFUS, DFAC, DFAS, DFAT listing date 6/14/21; DFAX, DFIV listing date 9/13/21; and DFUV listing date 5/9/22. The NAVs of the predecessor mutual funds are used for both NAV and market price performance from inception to listing.

# Data Source

Monthly: 3/1/2000 - 6/30/2025

## Sources and Descriptions of Data

Series Name	Date Range	Description
SEVG - PIA Dimensions 60/40 Portfolio - R2 (continued)	3/2000 - 6/2025	DFA Emerging Markets Core Equity 2 Portfolio Class I 6.00% DFA International Real Estate Securities Portfolio Class I 1.00% *Period adjustment: Adjustments: Basis Points: -5.0, Quarterly Period 3: From 4/2009 To 12/2015 Rebalance: Per 12 Months DFA One-Year Fixed Income Portfolio Class I 10.0% DFA International Value Portfolio Class I 10.0% DFA US Large Cap Value Portfolio Class I 12.00% DFA Real Estate Securities Portfolio Class I 2.00% DFA Five-Year Global Fixed Income Portfolio Class I 20.0% DFA International Small Cap Value Portfolio Class I 6.00%

**Performance data shown represents past performance. Past performance is no guarantee of future results and current performance may be higher or lower than the performance shown. The investment return and principal value of an investment will fluctuate so that an investor's shares, when redeemed, may be worth more or less than their original cost. Average annual total returns include reinvestment of dividends and capital gains. To obtain Dimensional Fund performance data current to the most recent month-end access our website at [www.dimensionalfund.com](http://www.dimensionalfund.com).**

See Standardized Performance Data and Disclosures. Performance for periods greater than one year are annualized unless specified otherwise. Indices are not available for direct investment; therefore, their performance does not reflect the expenses associate with the management of an actual portfolio. Prior to listing date the following ETFs operated as mutual funds: DFUS, DFAC, DFAS, DFAT listing date 6/14/21; DFAX, DFIV listing date 9/13/21; and DFUV listing date 5/9/22. The NAVs of the predecessor mutual funds are used for both NAV and market price performance from inception to listing.

# Data Source

Monthly: 3/1/2000 - 6/30/2025

## Sources and Descriptions of Data

Series Name	Date Range	Description
SEVG - PIA Dimensions 60/40 Portfolio - R2 (continued)	3/2000 - 6/2025	DFA US Large Company Portfolio 11.00% DFA US Small Cap Portfolio Class I 5.00% DFA US Targeted Value Portfolio Class I 6.00% DFA Emerging Markets Core Equity 2 Portfolio Class I 6.00% DFA International Real Estate Securities Portfolio Class I 2.00% DFA Short Term Extended Quality Portfolio 10.0% *Period adjustment: Adjustments: Basis Points: -5.0, Quarterly Period 4: From 1/2016 To 6/2025 (Latest) Rebalance: Per 12 Months DFA One-Year Fixed Income Portfolio Class I 10.0% DFA International Value Portfolio Class I 10.0%

**Performance data shown represents past performance. Past performance is no guarantee of future results and current performance may be higher or lower than the performance shown. The investment return and principal value of an investment will fluctuate so that an investor's shares, when redeemed, may be worth more or less than their original cost. Average annual total returns include reinvestment of dividends and capital gains. To obtain Dimensional Fund performance data current to the most recent month-end access our website at [www.dimensional.com](http://www.dimensional.com).**  
 See Standardized Performance Data and Disclosures. Performance for periods greater than one year are annualized unless specified otherwise. Indices are not available for direct investment; therefore, their performance does not reflect the expenses associate with the management of an actual portfolio. Prior to listing date the following ETFs operated as mutual funds: DFUS, DFAC, DFAS, DFAT listing date 6/14/21; DFAX, DFIV listing date 9/13/21; and DFUV listing date 5/9/22. The NAVs of the predecessor mutual funds are used for both NAV and market price performance from inception to listing.

# Data Source

Monthly: 3/1/2000 - 6/30/2025

## Sources and Descriptions of Data

Series Name	Date Range	Description
SEVG - PIA Dimensions 60/40 Portfolio - R2 (continued)	3/2000 - 6/2025	DFA US Large Cap Value Portfolio Class I 12.00% DFA Real Estate Securities Portfolio Class I 2.00% DFA Five-Year Global Fixed Income Portfolio Class I 20.0% DFA International Small Cap Value Portfolio Class I 6.00% DFA US Small Cap Portfolio Class I 5.00% DFA US Targeted Value Portfolio Class I 6.00% DFA Emerging Markets Core Equity 2 Portfolio Class I 6.00% DFA International Real Estate Securities Portfolio Class I 2.00% DFA Short Term Extended Quality Portfolio 10.0% Vanguard 500 Index Admiral 11.00% *Period adjustment: Adjustments: Basis Points: -5.0, Quarterly
SEVG - PIA Dimensions 70/30 Portfolio - R2	3/2000 - 6/2025	SEVG - PIA Dimensions 70/30 Portfolio - R2 From 3/2000 To 6/2025

**Performance data shown represents past performance. Past performance is no guarantee of future results and current performance may be higher or lower than the performance shown. The investment return and principal value of an investment will fluctuate so that an investor's shares, when redeemed, may be worth more or less than their original cost. Average annual total returns include reinvestment of dividends and capital gains. To obtain Dimensional Fund performance data current to the most recent month-end access our website at [www.dimensionalfund.com](http://www.dimensionalfund.com).**

See Standardized Performance Data and Disclosures. Performance for periods greater than one year are annualized unless specified otherwise. Indices are not available for direct investment; therefore, their performance does not reflect the expenses associate with the management of an actual portfolio. Prior to listing date the following ETFs operated as mutual funds: DFUS, DFAC, DFAS, DFAT listing date 6/14/21; DFAX, DFIV listing date 9/13/21; and DFUV listing date 5/9/22. The NAVs of the predecessor mutual funds are used for both NAV and market price performance from inception to listing.

# Data Source

Monthly: 3/1/2000 - 6/30/2025

## Sources and Descriptions of Data

Series Name	Date Range	Description
SEVG - PIA Dimensions 70/30 Portfolio - R2 (continued)	3/2000 - 6/2025	<p>Constructed under USD</p> <p>Period 1: From 3/2000 (Earliest) To 3/2007 Rebalance: Per 12 Months</p> <ul style="list-style-type: none"> <li>DFA Emerging Markets Value Portfolio Class I 3.500%</li> <li>DFA One-Year Fixed Income Portfolio Class I 7.500%</li> <li>DFA International Value Portfolio Class I 6.500%</li> <li>DFA US Large Cap Value Portfolio Class I 14.00%</li> <li>DFA Emerging Markets Small Cap Portfolio Class I 3.500%</li> <li>DFA Real Estate Securities Portfolio Class I 3.500%</li> <li>DFA Large Cap International Portfolio Class I 6.500%</li> <li>DFA Five-Year Global Fixed Income Portfolio Class I 22.500%</li> <li>DFA International Small Cap Value Portfolio Class I 5.500%</li> <li>DFA US Large Company Portfolio 14.00%</li> </ul>

**Performance data shown represents past performance. Past performance is no guarantee of future results and current performance may be higher or lower than the performance shown. The investment return and principal value of an investment will fluctuate so that an investor's shares, when redeemed, may be worth more or less than their original cost. Average annual total returns include reinvestment of dividends and capital gains. To obtain Dimensional Fund performance data current to the most recent month-end access our website at [www.dimensionalfund.com](http://www.dimensionalfund.com).**

See Standardized Performance Data and Disclosures. Performance for periods greater than one year are annualized unless specified otherwise. Indices are not available for direct investment; therefore, their performance does not reflect the expenses associate with the management of an actual portfolio. Prior to listing date the following ETFs operated as mutual funds: DFUS, DFAC, DFAS, DFAT listing date 6/14/21; DFAX, DFIV listing date 9/13/21; and DFUV listing date 5/9/22. The NAVs of the predecessor mutual funds are used for both NAV and market price performance from inception to listing.

# Data Source

Monthly: 3/1/2000 - 6/30/2025

## Sources and Descriptions of Data

Series Name	Date Range	Description
SEVG - PIA Dimensions 70/30 Portfolio - R2 (continued)	3/2000 - 6/2025	DFA US Small Cap Portfolio Class I 7.00% DFA US Targeted Value Portfolio Class I 6.00% *Period adjustment: Adjustments: Basis Points: -5.0, Quarterly Period 2: From 4/2007 To 3/2009 Rebalance: Per 12 Months DFA One-Year Fixed Income Portfolio Class I 10.0% DFA International Value Portfolio Class I 6.500% DFA US Large Cap Value Portfolio Class I 14.00% DFA Real Estate Securities Portfolio Class I 2.00% DFA Large Cap International Portfolio Class I 7.00% DFA Five-Year Global Fixed Income Portfolio Class I 20.0%

**Performance data shown represents past performance. Past performance is no guarantee of future results and current performance may be higher or lower than the performance shown. The investment return and principal value of an investment will fluctuate so that an investor's shares, when redeemed, may be worth more or less than their original cost. Average annual total returns include reinvestment of dividends and capital gains. To obtain Dimensional Fund performance data current to the most recent month-end access our website at [www.dimensionalfund.com](http://www.dimensionalfund.com).**  
 See Standardized Performance Data and Disclosures. Performance for periods greater than one year are annualized unless specified otherwise. Indices are not available for direct investment; therefore, their performance does not reflect the expenses associate with the management of an actual portfolio. Prior to listing date the following ETFs operated as mutual funds: DFUS, DFAC, DFAS, DFAT listing date 6/14/21; DFAX, DFIV listing date 9/13/21; and DFUV listing date 5/9/22. The NAVs of the predecessor mutual funds are used for both NAV and market price performance from inception to listing.

# Data Source

Monthly: 3/1/2000 - 6/30/2025

## Sources and Descriptions of Data

Series Name	Date Range	Description
SEVG - PIA Dimensions 70/30 Portfolio - R2 (continued)	3/2000 - 6/2025	DFA International Small Cap Value Portfolio Class I 5.500% DFA US Large Company Portfolio 14.00% DFA US Small Cap Portfolio Class I 7.00% DFA US Targeted Value Portfolio Class I 6.00% DFA Emerging Markets Core Equity 2 Portfolio Class I 7.00% DFA International Real Estate Securities Portfolio Class I 1.00% *Period adjustment: Adjustments: Basis Points: -5.0, Quarterly Period 3: From 4/2009 To 12/2015 Rebalance: Per 12 Months DFA One-Year Fixed Income Portfolio Class I 8.00% DFA International Value Portfolio Class I 11.00%

**Performance data shown represents past performance. Past performance is no guarantee of future results and current performance may be higher or lower than the performance shown. The investment return and principal value of an investment will fluctuate so that an investor's shares, when redeemed, may be worth more or less than their original cost. Average annual total returns include reinvestment of dividends and capital gains. To obtain Dimensional Fund performance data current to the most recent month-end access our website at [www.dimensionalfund.com](http://www.dimensionalfund.com).**

See Standardized Performance Data and Disclosures. Performance for periods greater than one year are annualized unless specified otherwise. Indices are not available for direct investment; therefore, their performance does not reflect the expenses associate with the management of an actual portfolio. Prior to listing date the following ETFs operated as mutual funds: DFUS, DFAC, DFAS, DFAT listing date 6/14/21; DFAX, DFIV listing date 9/13/21; and DFUV listing date 5/9/22. The NAVs of the predecessor mutual funds are used for both NAV and market price performance from inception to listing.

# Data Source

Monthly: 3/1/2000 - 6/30/2025

## Sources and Descriptions of Data

Series Name	Date Range	Description
SEVG - PIA Dimensions 70/30 Portfolio - R2 (continued)	3/2000 - 6/2025	DFA US Large Cap Value Portfolio Class I 13.00% DFA Real Estate Securities Portfolio Class I 3.00% DFA Five-Year Global Fixed Income Portfolio Class I 15.00% DFA International Small Cap Value Portfolio Class I 7.00% DFA US Large Company Portfolio 13.00% DFA US Small Cap Portfolio Class I 6.00% DFA US Targeted Value Portfolio Class I 7.00% DFA Emerging Markets Core Equity 2 Portfolio Class I 7.00% DFA International Real Estate Securities Portfolio Class I 3.00% DFA Short Term Extended Quality Portfolio 7.00% *Period adjustment: Adjustments: Basis Points: -5.0, Quarterly Period 4:

**Performance data shown represents past performance. Past performance is no guarantee of future results and current performance may be higher or lower than the performance shown. The investment return and principal value of an investment will fluctuate so that an investor's shares, when redeemed, may be worth more or less than their original cost. Average annual total returns include reinvestment of dividends and capital gains. To obtain Dimensional Fund performance data current to the most recent month-end access our website at [www.dimensionalfund.com](http://www.dimensionalfund.com).**

See Standardized Performance Data and Disclosures. Performance for periods greater than one year are annualized unless specified otherwise. Indices are not available for direct investment; therefore, their performance does not reflect the expenses associate with the management of an actual portfolio. Prior to listing date the following ETFs operated as mutual funds: DFUS, DFAC, DFAS, DFAT listing date 6/14/21; DFAX, DFIV listing date 9/13/21; and DFUV listing date 5/9/22. The NAVs of the predecessor mutual funds are used for both NAV and market price performance from inception to listing.

# Data Source

Monthly: 3/1/2000 - 6/30/2025

## Sources and Descriptions of Data

Series Name	Date Range	Description
SEVG - PIA Dimensions 70/30 Portfolio - R2 (continued)	3/2000 - 6/2025	<p>From 1/2016 To 6/2025 (Latest)</p> <p>Rebalance: Per 12 Months</p> <p>DFA One-Year Fixed Income Portfolio Class I 8.00%</p> <p>DFA International Value Portfolio Class I 11.00%</p> <p>DFA US Large Cap Value Portfolio Class I 13.00%</p> <p>DFA Real Estate Securities Portfolio Class I 3.00%</p> <p>DFA Five-Year Global Fixed Income Portfolio Class I 15.00%</p> <p>DFA International Small Cap Value Portfolio Class I 7.00%</p> <p>DFA US Small Cap Portfolio Class I 6.00%</p> <p>DFA US Targeted Value Portfolio Class I 7.00%</p> <p>DFA Emerging Markets Core Equity 2 Portfolio Class I 7.00%</p> <p>DFA International Real Estate Securities Portfolio Class I 3.00%</p> <p>DFA Short Term Extended Quality Portfolio 7.00%</p>

**Performance data shown represents past performance. Past performance is no guarantee of future results and current performance may be higher or lower than the performance shown. The investment return and principal value of an investment will fluctuate so that an investor's shares, when redeemed, may be worth more or less than their original cost. Average annual total returns include reinvestment of dividends and capital gains. To obtain Dimensional Fund performance data current to the most recent month-end access our website at [www.dimensionalfund.com](http://www.dimensionalfund.com).**

See Standardized Performance Data and Disclosures. Performance for periods greater than one year are annualized unless specified otherwise. Indices are not available for direct investment; therefore, their performance does not reflect the expenses associate with the management of an actual portfolio. Prior to listing date the following ETFs operated as mutual funds: DFUS, DFAC, DFAS, DFAT listing date 6/14/21; DFAX, DFIV listing date 9/13/21; and DFUV listing date 5/9/22. The NAVs of the predecessor mutual funds are used for both NAV and market price performance from inception to listing.

# Data Source

Monthly: 3/1/2000 - 6/30/2025

## Sources and Descriptions of Data

Series Name	Date Range	Description
SEVG - PIA Dimensions 70/30 Portfolio - R2 (continued)	3/2000 - 6/2025	Vanguard 500 Index Admiral 13.00% *Period adjustment: Adjustments: Basis Points: -5.0, Quarterly
SEVG - PIA Dimensions 80/20 Portfolio - R2	3/2000 - 6/2025	SEVG - PIA Dimensions 80/20 Portfolio - R2 From 3/2000 To 6/2025 Constructed under USD Period 1: From 3/2000 (Earliest) To 3/2007 Rebalance: Per 12 Months DFA Emerging Markets Value Portfolio Class I 4.00% DFA One-Year Fixed Income Portfolio Class I 5.00% DFA International Value Portfolio Class I 7.00% DFA US Large Cap Value Portfolio Class I 16.00%

**Performance data shown represents past performance. Past performance is no guarantee of future results and current performance may be higher or lower than the performance shown. The investment return and principal value of an investment will fluctuate so that an investor's shares, when redeemed, may be worth more or less than their original cost. Average annual total returns include reinvestment of dividends and capital gains. To obtain Dimensional Fund performance data current to the most recent month-end access our website at [www.dimensionalfund.com](http://www.dimensionalfund.com).**

See Standardized Performance Data and Disclosures. Performance for periods greater than one year are annualized unless specified otherwise. Indices are not available for direct investment; therefore, their performance does not reflect the expenses associate with the management of an actual portfolio. Prior to listing date the following ETFs operated as mutual funds: DFUS, DFAC, DFAS, DFAT listing date 6/14/21; DFAX, DFIV listing date 9/13/21; and DFUV listing date 5/9/22. The NAVs of the predecessor mutual funds are used for both NAV and market price performance from inception to listing.

# Data Source

Monthly: 3/1/2000 - 6/30/2025

## Sources and Descriptions of Data

Series Name	Date Range	Description
SEVG - PIA Dimensions 80/20 Portfolio - R2 (continued)	3/2000 - 6/2025	DFA Emerging Markets Small Cap Portfolio Class I 4.00% DFA Real Estate Securities Portfolio Class I 4.00% DFA Large Cap International Portfolio Class I 8.00% DFA Five-Year Global Fixed Income Portfolio Class I 15.00% DFA International Small Cap Value Portfolio Class I 6.00% DFA US Large Company Portfolio 16.00% DFA US Small Cap Portfolio Class I 8.00% DFA US Targeted Value Portfolio Class I 7.00% *Period adjustment: Adjustments: Basis Points: -5.0, Quarterly Period 2: From 4/2007 To 3/2009 Rebalance: Per 12 Months

**Performance data shown represents past performance. Past performance is no guarantee of future results and current performance may be higher or lower than the performance shown. The investment return and principal value of an investment will fluctuate so that an investor's shares, when redeemed, may be worth more or less than their original cost. Average annual total returns include reinvestment of dividends and capital gains. To obtain Dimensional Fund performance data current to the most recent month-end access our website at [www.dimensionalfund.com](http://www.dimensionalfund.com).**  
 See Standardized Performance Data and Disclosures. Performance for periods greater than one year are annualized unless specified otherwise. Indices are not available for direct investment; therefore, their performance does not reflect the expenses associate with the management of an actual portfolio. Prior to listing date the following ETFs operated as mutual funds: DFUS, DFAC, DFAS, DFAT listing date 6/14/21; DFAX, DFIV listing date 9/13/21; and DFUV listing date 5/9/22. The NAVs of the predecessor mutual funds are used for both NAV and market price performance from inception to listing.

# Data Source

Monthly: 3/1/2000 - 6/30/2025

## Sources and Descriptions of Data

Series Name	Date Range	Description
SEVG - PIA Dimensions 80/20 Portfolio - R2 (continued)	3/2000 - 6/2025	DFA One-Year Fixed Income Portfolio Class I 5.00% DFA International Value Portfolio Class I 7.00% DFA US Large Cap Value Portfolio Class I 16.00% DFA Real Estate Securities Portfolio Class I 3.00% DFA Large Cap International Portfolio Class I 8.00% DFA Five-Year Global Fixed Income Portfolio Class I 15.00% DFA International Small Cap Value Portfolio Class I 6.00% DFA US Large Company Portfolio 16.00% DFA US Small Cap Portfolio Class I 8.00% DFA US Targeted Value Portfolio Class I 7.00% DFA Emerging Markets Core Equity 2 Portfolio Class I 8.00% DFA International Real Estate Securities Portfolio Class I 1.00%

\*Period adjustment:

**Performance data shown represents past performance. Past performance is no guarantee of future results and current performance may be higher or lower than the performance shown. The investment return and principal value of an investment will fluctuate so that an investor's shares, when redeemed, may be worth more or less than their original cost. Average annual total returns include reinvestment of dividends and capital gains. To obtain Dimensional Fund performance data current to the most recent month-end access our website at [www.dimensionalfund.com](http://www.dimensionalfund.com).**  
 See Standardized Performance Data and Disclosures. Performance for periods greater than one year are annualized unless specified otherwise. Indices are not available for direct investment; therefore, their performance does not reflect the expenses associate with the management of an actual portfolio. Prior to listing date the following ETFs operated as mutual funds: DFUS, DFAC, DFAS, DFAT listing date 6/14/21; DFAX, DFIV listing date 9/13/21; and DFUV listing date 5/9/22. The NAVs of the predecessor mutual funds are used for both NAV and market price performance from inception to listing.

# Data Source

Monthly: 3/1/2000 - 6/30/2025

## Sources and Descriptions of Data

Series Name	Date Range	Description
SEVG - PIA Dimensions 80/20 Portfolio - R2 (continued)	3/2000 - 6/2025	Adjustments: Basis Points: -5.0, Quarterly Period 3: From 4/2009 To 12/2015 Rebalance: Per 12 Months DFA One-Year Fixed Income Portfolio Class I 5.00% DFA International Value Portfolio Class I 13.00% DFA US Large Cap Value Portfolio Class I 15.00% DFA Real Estate Securities Portfolio Class I 3.00% DFA Five-Year Global Fixed Income Portfolio Class I 10.0% DFA International Small Cap Value Portfolio Class I 8.00% DFA US Large Company Portfolio 15.00% DFA US Small Cap Portfolio Class I 7.00% DFA US Targeted Value Portfolio Class I 8.00%

**Performance data shown represents past performance. Past performance is no guarantee of future results and current performance may be higher or lower than the performance shown. The investment return and principal value of an investment will fluctuate so that an investor's shares, when redeemed, may be worth more or less than their original cost. Average annual total returns include reinvestment of dividends and capital gains. To obtain Dimensional Fund performance data current to the most recent month-end access our website at [www.dimensionalfund.com](http://www.dimensionalfund.com).**  
 See Standardized Performance Data and Disclosures. Performance for periods greater than one year are annualized unless specified otherwise. Indices are not available for direct investment; therefore, their performance does not reflect the expenses associate with the management of an actual portfolio. Prior to listing date the following ETFs operated as mutual funds: DFUS, DFAC, DFAS, DFAT listing date 6/14/21; DFAX, DFIV listing date 9/13/21; and DFUV listing date 5/9/22. The NAVs of the predecessor mutual funds are used for both NAV and market price performance from inception to listing.

# Data Source

Monthly: 3/1/2000 - 6/30/2025

## Sources and Descriptions of Data

Series Name	Date Range	Description
SEVG - PIA Dimensions 80/20 Portfolio - R2 (continued)	3/2000 - 6/2025	DFA Emerging Markets Core Equity 2 Portfolio Class I 8.00% DFA International Real Estate Securities Portfolio Class I 3.00% DFA Short Term Extended Quality Portfolio 5.00% *Period adjustment: Adjustments: Basis Points: -5.0, Quarterly Period 4: From 1/2016 To 6/2025 (Latest) Rebalance: Per 12 Months DFA One-Year Fixed Income Portfolio Class I 5.00% DFA International Value Portfolio Class I 13.00% DFA US Large Cap Value Portfolio Class I 15.00% DFA Real Estate Securities Portfolio Class I 3.00% DFA Five-Year Global Fixed Income Portfolio Class I 10.0%

**Performance data shown represents past performance. Past performance is no guarantee of future results and current performance may be higher or lower than the performance shown. The investment return and principal value of an investment will fluctuate so that an investor's shares, when redeemed, may be worth more or less than their original cost. Average annual total returns include reinvestment of dividends and capital gains. To obtain Dimensional Fund performance data current to the most recent month-end access our website at [www.dimensionalfund.com](http://www.dimensionalfund.com).**

See Standardized Performance Data and Disclosures. Performance for periods greater than one year are annualized unless specified otherwise. Indices are not available for direct investment; therefore, their performance does not reflect the expenses associate with the management of an actual portfolio. Prior to listing date the following ETFs operated as mutual funds: DFUS, DFAC, DFAS, DFAT listing date 6/14/21; DFAX, DFIV listing date 9/13/21; and DFUV listing date 5/9/22. The NAVs of the predecessor mutual funds are used for both NAV and market price performance from inception to listing.

# Data Source

Monthly: 3/1/2000 - 6/30/2025

## Sources and Descriptions of Data

Series Name	Date Range	Description
SEVG - PIA Dimensions 80/20 Portfolio - R2 (continued)	3/2000 - 6/2025	DFA International Small Cap Value Portfolio Class I 8.00% DFA US Small Cap Portfolio Class I 7.00% DFA US Targeted Value Portfolio Class I 8.00% DFA Emerging Markets Core Equity 2 Portfolio Class I 8.00% DFA International Real Estate Securities Portfolio Class I 3.00% DFA Short Term Extended Quality Portfolio 5.00% Vanguard 500 Index Admiral 15.00% *Period adjustment: Adjustments: Basis Points: -5.0, Quarterly

**Performance data shown represents past performance. Past performance is no guarantee of future results and current performance may be higher or lower than the performance shown. The investment return and principal value of an investment will fluctuate so that an investor's shares, when redeemed, may be worth more or less than their original cost. Average annual total returns include reinvestment of dividends and capital gains. To obtain Dimensional Fund performance data current to the most recent month-end access our website at [www.dimensionalfund.com](http://www.dimensionalfund.com).**  
 See Standardized Performance Data and Disclosures. Performance for periods greater than one year are annualized unless specified otherwise. Indices are not available for direct investment; therefore, their performance does not reflect the expenses associate with the management of an actual portfolio. Prior to listing date the following ETFs operated as mutual funds: DFUS, DFAC, DFAS, DFAT listing date 6/14/21; DFAX, DFIV listing date 9/13/21; and DFUV listing date 5/9/22. The NAVs of the predecessor mutual funds are used for both NAV and market price performance from inception to listing.

# Standard Performance Data and Disclosures

As of: June 30, 2025

---

**Dimensional Fund Advisors LP is an investment advisor registered with the Securities and Exchange Commission. Consider the investment objectives, risks, and charges and expenses of the Dimensional funds carefully before investing. For this and other information about the Dimensional funds, please read the prospectus carefully before investing. Prospectuses are available by calling Dimensional Fund Advisors collect at (512) 306-7400 or by visiting [www.dimensional.com](http://www.dimensional.com).**

This report and the information contained herein are subject to the terms of the End User License Agreement for Returns Program.

Selection of funds, indices and time periods presented chosen by advisor.

Performance for periods greater than one year are annualized unless marked with an asterisk (\*). Selection of funds, indices and time periods presented chosen by advisor. Indices are not available for direct investment and performance does not reflect expenses of an actual portfolio.

**Performance data shown represents past performance. Past performance is no guarantee of future results and current performance may be higher or lower than the performance shown. The investment return and principal value of an investment will fluctuate so that an investor's shares, when redeemed, may be worth more or less than their original cost. To obtain Dimensional Fund performance data current to the most recent month-end access our website at [www.dimensional.com](http://www.dimensional.com).** Average annual total returns include reinvestment of dividends and capital gains.

## Model Constructions

Model portfolios are constructed in the Returns Program using past data of funds or indices as of a specific date, assigning weights to those funds or indices to equal 100%. The model portfolios constructed are hypothetical and are not representative of actual portfolios. Their performance is hypothetical, for illustrative purposes only and is subject to limitations. Unless otherwise specified by the user, the hypothetical performance is gross of fees and is rebalanced monthly. The performance presented does not replace an advisor's actual model portfolio performance. Past and hypothetical results are no guarantee of future results.

The model performance is based on model/back tested asset allocations. The performance was achieved with the retroactive application of a model designed with the benefit of hindsight; it does not represent actual investment performance. Back-tested model performance is hypothetical (does not reflect trading in actual portfolios) and may not reflect the impact that economic and market factors may have had on advisor's decision-making if the advisor were actually managing client money. Material is not to be considered a recommendation or investment advice to buy or sell any security.

# Standard Performance Data and Disclosures

As of: June 30, 2025

---

## Dimensional Wealth Models

Performance shown is hypothetical and for illustrative purposes only. The performance is based on model asset allocations using actual, historical underlying fund data and is based on net asset value returns for underlying mutual funds and exchange-traded funds. The performance was achieved with the retroactive application of a model designed with the benefit of hindsight; it does not represent actual investment performance and it does not take into account any individual investor circumstances. Hypothetical model performance does not reflect trading in actual portfolios and may not reflect the impact that economic and market factors may have had on decision-making if managing actual client money. Actual performance of any fund or strategy may vary significantly from the hypothetical performance presented due to assumptions regarding fees, transactions costs, liquidity or other market factors. Actual historical allocations could have differed, perhaps significantly. Advisory fees paid to underlying component funds are reflected in the performance results. Advisory fees to a financial advisor, custodian fees, trading costs and transaction costs that may be applicable in the management of an overall portfolio are not reflected.

Hypothetical performance for Dimensional Wealth Models reflects changes in the underlying fund allocations, if any, since the model's inception. Performance results prior to the Dimensional Model's inception are computed using the inception fund weights and component fund performance back to the inception of the youngest component fund. The Dimensional Models do not include an allocation to cash or cash equivalents, except indirectly through a Dimensional Fund.

Results presented are no guarantee of future results and may vary. The investment return and principal value of an investment will fluctuate and may be worth more or less than the original investment.

## Dimensional Indices

**Past performance is no guarantee of future results. Actual returns may be lower.** The Dimensional Indices represent academic concepts that may be used in portfolio construction and are not available for the investment or for use as a benchmark. Index returns are not representative of actual portfolio returns and do not reflect costs and fees associated with an actual investment. See "Index Description" for descriptions of the Dimensional Index data.

These indices have been retrospectively calculated by Dimensional Fund Advisors LP and did not exist prior to their index inception dates. Accordingly, results shown during the periods prior to each index's index inception date do not represent actual returns of the index. Other periods selected may have different results, including losses. Back-tested index performance is hypothetical and is provided for informational purposes only to indicate historical performance had the index been calculated over the relevant time periods. Back-tested performance results assume the reinvestment of dividends and capital gains.

## Principal Risks

**Risks** include loss of principal and fluctuating value. Investment value will fluctuate, and shares, when redeemed, may be worth more or less than original cost.

# Standard Performance Data and Disclosures

As of: June 30, 2025

---

**Small and micro cap** securities are subject to greater volatility than those in other asset categories.

**International and emerging markets** investing involves special risks, such as currency fluctuation and political instability. Investing in emerging markets may accentuate these risks.

**Sector-specific investments** focus on a specific segment of the market, which can increase investment risks.

**Fixed income securities** are subject to increased loss of principal during periods of rising interest rates. Fixed income investments are subject to various other risks, including changes in credit quality, liquidity, prepayments, call risk, and other factors. Municipal securities are subject to the risks of adverse economic and regulatory changes in their issuing states.

**Real estate investment** risks include changes in real estate values and property taxes, interest rates, cash flow of underlying real estate assets, supply and demand, and the management skill and creditworthiness of the issuer.

**Sustainability and social funds** use environmental and social screens that may limit investment opportunities for the fund.

**Commodities** include increased risks, such as political, economic, and currency instability, and may not be appropriate for all investors. The portfolio may be more volatile than a diversified fund because the portfolio invests in a smaller number of issuers and commodity sectors.

**Tax-managed** strategies consider tax implications of investment decisions, which may affect fund holdings when compared to non-tax-managed strategies, and they may perform differently than non-tax-managed strategies.

**ETFs** trade like stocks, fluctuate in market value and may trade either at a premium or discount to the net asset value. ETF shares trade at market price and are not individually redeemable with the issuing fund, other than in largeshare amounts called creation units. ETFs are subject to risk similar to those of stocks, including regarding short-selling and margin account maintenance. Brokerage commissions and expenses will reduce returns.

**Fund of funds** risk. The investment performance of each Portfolio is affected by the investment performance of the Underlying Funds in which the Portfolio invests. The ability of a Portfolio to achieve its investment objective depends on the ability of the Underlying Funds to meet their investment objectives and on the Advisor's decisions regarding the allocation of the Portfolio's assets among the Underlying Funds. There can be no assurance that the investment objective of any Portfolio or Underlying Fund will be achieved. Through their investments in the Underlying Funds, the Portfolios are subject to the risks of the Underlying Funds investments. The risks of the Underlying Funds may include Market Risk, Small Company Risk, Risks of Concentrating in the Real Estate Industry, Emerging Markets Risk, Interest Rate Risk, Credit Risk, and Risks of Banking Concentration.

**The fund prospectuses contain more information about investment risks.**